



RUSSELL SIMPSON

Fabulous six-bedroom
family home on a
prestigious street close to
Kensington Gardens

VICTORIA ROAD
KENSINGTON W8

Victoria Road Kensington W8

£11,500,000

BEDROOMS 6	INTERNAL 4,401 SQ FT	OUTDOOR 660 SQ FT	COUNCIL RBKC
RECEPTION ROOMS 4-5	409 SQ M	EPC E	COUNCIL TAX Band H
BATHROOMS 5	—	TENURE Freehold	





The Property



Attractive townhouse with white stucco façade, spacious layout and modern interiors

Stepping into the house on the raised ground floor, the entrance hall leads through to a well-proportioned reception room. Front and rear bay windows flood this space with light, while lofty ceilings give added elegance. This floor also contains a guest WC and a study.

The lower ground floor is entirely occupied by a generous living space. This includes an open-plan kitchen with central island, a dining area and a family television area. This floor also features a guest WC and separate street access.





Russell Simpson



Victoria Road

The basement floor offers a gym that could also be used as a media room, a bathroom, a utility room, and an ensuite bedroom with sliding doors leading out onto the front patio. It also offers considerable storage space, while the ceiling height gives these rooms fantastic flexibility.

The property includes a patio garden with wooden decking. Accessed via sliding doors that open onto the kitchen living area, it creates the perfect space for entertaining.





The Principal Bedroom

The first floor contains the principal bedroom suite, including a bedroom, a bathroom with a bath, and several walk-in wardrobes.



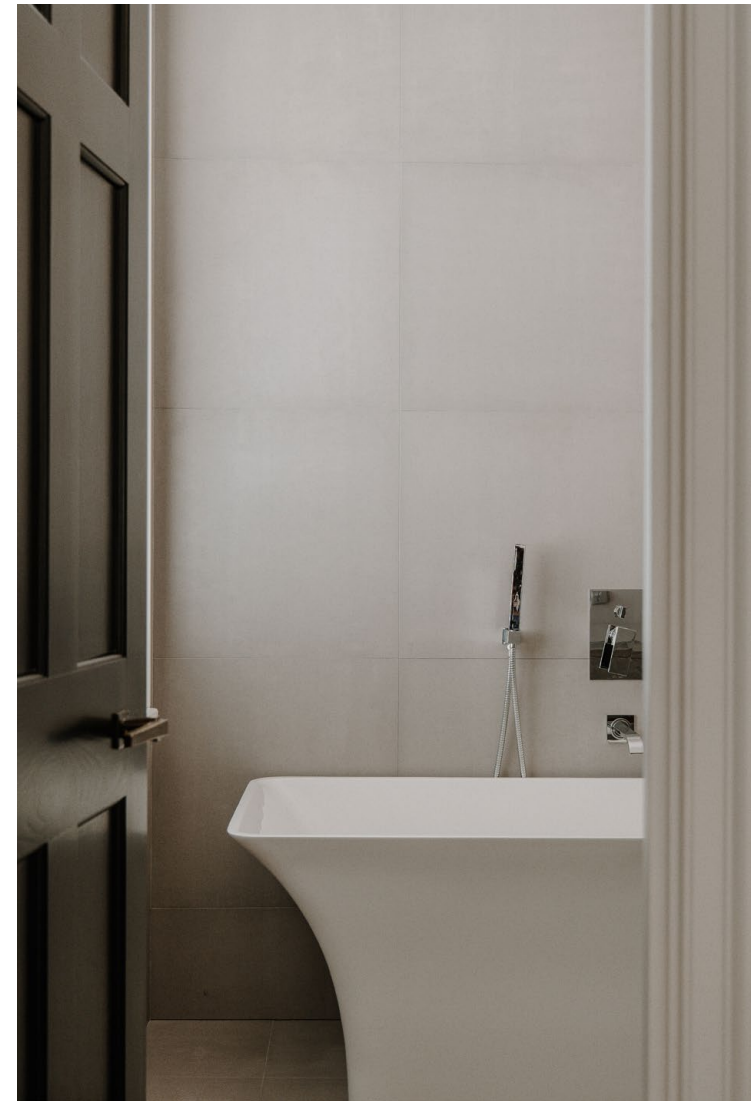
Russell Simpson

Victoria Road





The first floor also features a study on the half-landing.
The second floor contains three more bedrooms, all with
ensuite bathrooms and inbuilt wardrobe space.



This impressive house was entirely rebuilt behind a traditional façade, which was updated itself in 2023. It is decorated in a sophisticated style blending classical and contemporary details and presented in superb condition.

The interiors were furnished to the highest standard by celebrated designer Jean-Louis Deniot. They include air conditioning and underfloor heating, as well as new insulation and double glazing throughout.





The Neighbourhood

Victoria Road is a wide street running south from Kensington Gardens, lined with grand white stucco townhouses dating from the 1840s. Its celebrated former residents include the ballet dancer Rudolf Nureyev, the poet Henry Newbolt, and the famous Mitford family.

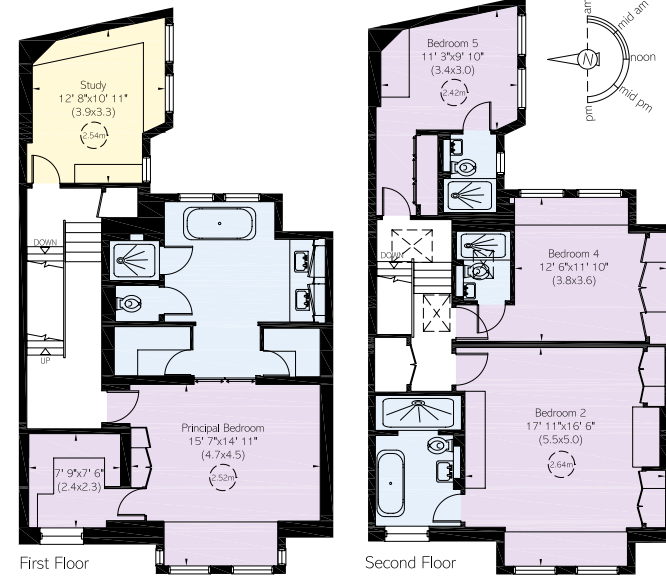
From here, Gloucester Road and Kensington High Street are both close, offering a mix of restaurants, shops and underground stations. In addition, Kensington Gardens and Hyde Park are a short walk away, while the world-class cultural institutions of South Kensington are also nearby. Finally, the area is well supplied with schools for all ages.

APPROXIMATE INTERNAL AREA

4,401 SQ FT / 409 SQ M

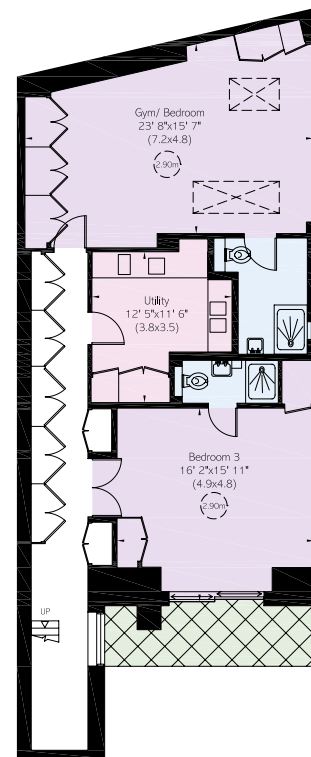
OUTSIDE AREA

660 SQ FT / 61 SQ M

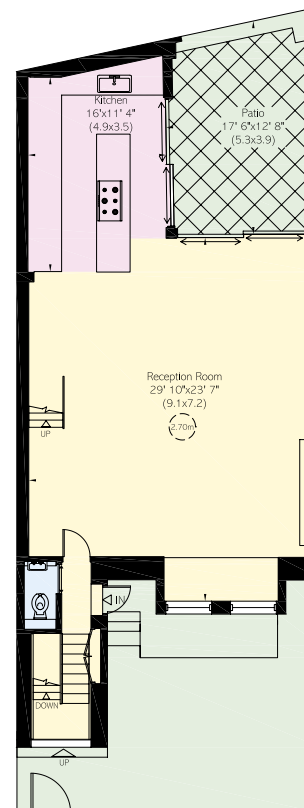


First Floor

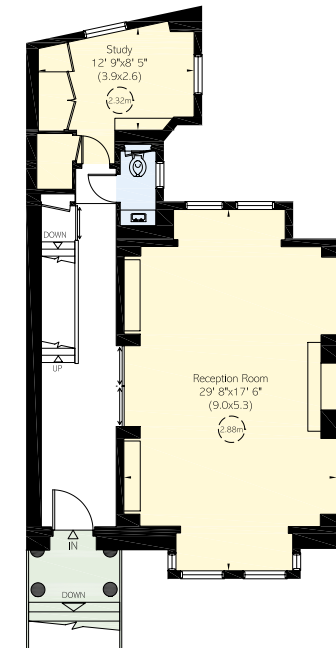
Second Floor



Basement



Lower Ground Floor



Raised Ground Floor

**RUSSELL
SIMPSON**

Contact us

+44 (0) 20 3761 9691

[Email](#)

www.russellsimpson.co.uk

Kensington & Notting Hill

13 Kensington Square
London
W8 5HD

View

[Watch the video on YouTube](#)

In accordance with the Property Mis-Description Act 1991, the following details have been prepared in good faith, and are not intended to constitute part of an offer or contract. Any information contained herein (whether in the text, plans or photographs) is given in good faith but should not be relied upon as being a statement of representation of fact. Nothing in these Particulars shall be deemed to be a statement that the property is in good condition or otherwise nor that any services or facilities are in good working order. Any measurements of distances referred to herein are approximate only. October 2021