

**RUSSELL  
SIMPSON**

Graceful five-bedroom family home with  
access to a sought-after garden square

THURLOE STREET  
SOUTH KENSINGTON SW7



Thurloe Street  
South Kensington SW7

£5,950,000

BEDROOMS 4-5	INTERNAL 3,576 SQ FT	OUTDOOR 1,238 SQ FT	COUNCIL RBKC
RECEPTION ROOMS 5	332 SQ M	EPC D	COUNCIL TAX Band H
BATHROOMS 4		TENURE Freehold	



# The Property

Grade II listed white stucco terrace house with spacious interiors and idyllic rear garden, providing prime afternoon sunlight.

Entering the house on the raised ground floor, the front hall opens onto a dining room. This is an elegant space with a wide window, high ceilings and a moulded fireplace surround. Next door is a kitchen, flowing through to a reception room with room for informal seating and entertaining. An overhead skylight fills this space with brightness, while double French doors give access to the garden.

The first floor features a lofty drawing room, with floor-to-ceiling windows, opening onto the front balcony. This leads through to a second reception room, while a study occupies the half landing.



Thurloe Street









## Indoor Spaces

The lower ground floor contains two bedrooms; one with a dressing room and an ensuite bathroom, while the other, also ensuite, is currently used as a family playroom. This level benefits its own, private street access, allowing the space to be flexible for guests or a live-in housekeeper.

The principal bedroom suite is found on the second floor. It contains a spacious double bedroom, a dressing room, and a bathroom with both shower and bath. The third floor has two more bedrooms, sharing a bathroom. There is also an additional utility room on the half landing below.

This attractive family home has been decorated in a classical fashion and has eye-catching rear views towards the towers of the Natural History Museum and the Victoria & Albert Museum. The property includes a charming, north-facing garden with a lawn and paved area, ideal for outdoor dining and entertaining.







# Outdoor Spaces

The house is set back from the street with a surprisingly spacious gated front garden, bordered by a beautiful Californian Lilac that flowers during the late spring and early summer, while further storage is provided via the vaults and attic. Residents also have access to the communal garden on Thurloe Square, one of the few London squares to allow dogs.





# The Neighbourhood

Thurloe Street is an attractive road, leading between Thurloe Square and South Kensington underground station. The square was laid out in the 1820s, its houses mostly designed by the celebrated Victorian architect George Basevi.

The close proximity to transport gives easy access to the City, the West End, as well as Heathrow Airport, via the District, Circle and Piccadilly Line.

From here, the neighbourhood's many outstanding museums and cultural institutions are close. The house is also in close proximity to many schools, such as Lycée Francais, Glendower Prep and Knightsbridge School. In addition, the shops and restaurants of Chelsea and Knightsbridge are a short walk away, along with the open spaces of Hyde Park and Kensington Gardens.

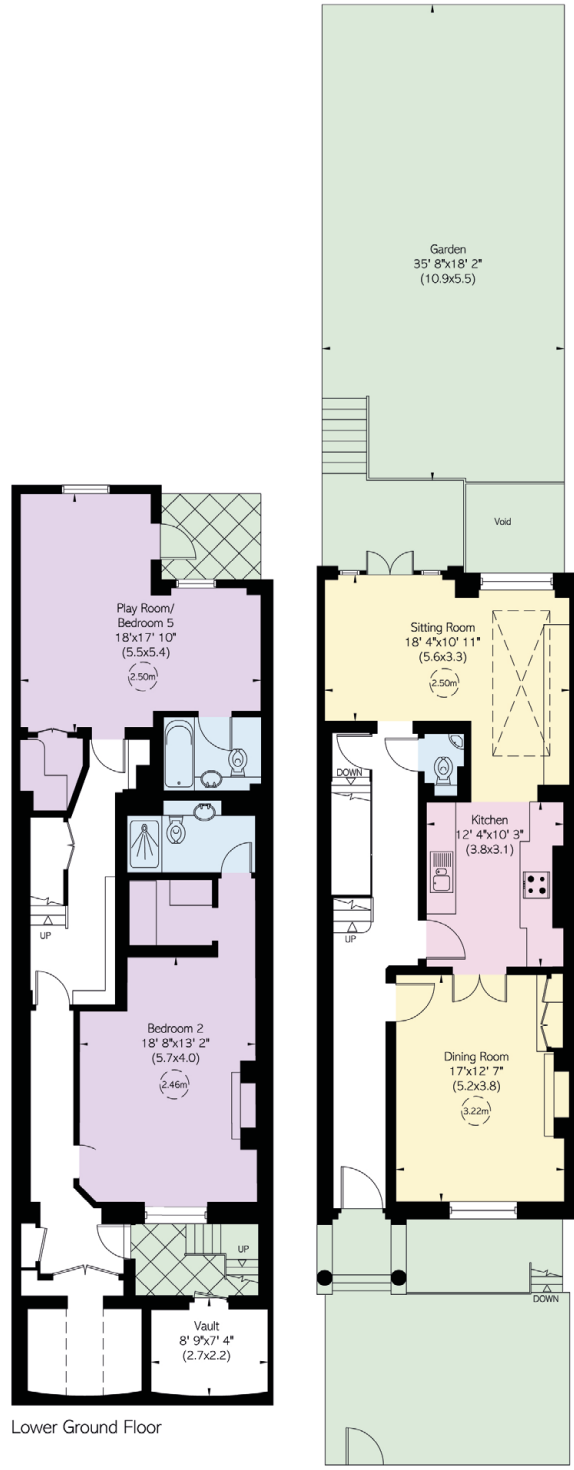
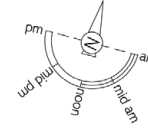
# Thurloe Street, SW7

**RUSSELL SIMPSON**

**Approximate Internal Area**  
 3,576 sq ft / 332 sq m  
**Including limited use area and vault**  
 112 sq ft / 10 sq m  
**Outside Area**  
 1,338 sq ft / 115 sq m

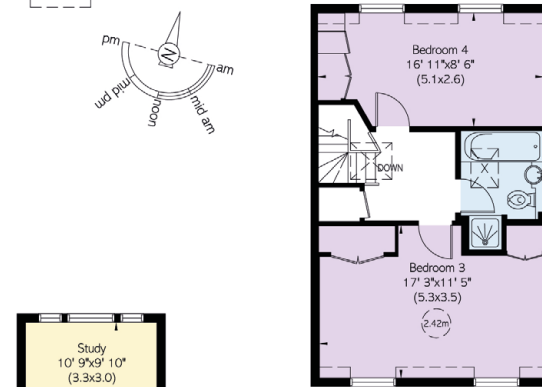
This plan is for layout guidance only. Not drawn to scale unless stated. Windows and door openings are approximate. Whilst every care is taken in the preparation of this plan, please check all dimensions, shapes, and compass bearings before making any decisions reliant upon them.

Reduced head height below 1.5m

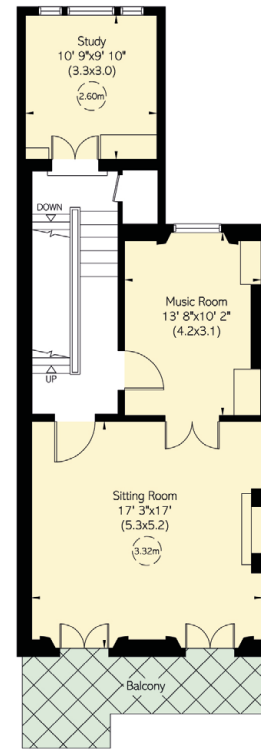


Lower Ground Floor

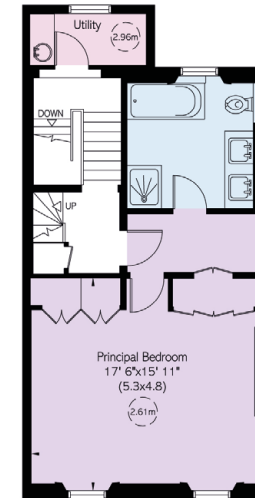
Raised Ground Floor



Third Floor



First Floor



Second Floor



---

## Contact us

+44 (0) 20 7225 0277

[Email](#)

[www.russellsimpson.co.uk](http://www.russellsimpson.co.uk)

---

## Chelsea

151A Sydney Street  
London SW3 6NT

# RUSSELL SIMPSON

In accordance with the Property Mis-Description Act 1991, the following details have been prepared in good faith, and are not intended to constitute part of an offer or contract. Any information contained herein (whether in the text, plans or photographs) is given in good faith but should not be relied upon as being a statement of representation of fact. Nothing in these Particulars shall be deemed to be a statement that the property is in good condition or otherwise nor that any services or facilities are in good working order. Any measurements of distances referred to herein are approximate only.  
October 2021