

**RUSSELL
SIMPSON**

Unique mews house in prestigious
South Kensington

QUEENS GATE MEWS
SOUTH KENSINGTON SW7



Queens Gate Mews
South Kensington SW7

£5,000,000

BEDROOMS 3	INTERNAL 2,376 SQ FT	COUNCIL RBKC
RECEPTION ROOMS 2	221 SQ M	COUNCIL TAX Band H
BATHROOMS 2	TENURE Freehold	EPC B



The Property

A beautifully presented three-bedroom house

Entering the house on the ground floor, you step into a welcoming entrance area, giving access to a spacious, open-plan kitchen and reception room, lined with contemporary fitted units along one side and filled with light through two large windows. The entrance hall also gives access to a large garage.

Ascending to the first floor, there are two impressive bedrooms, both benefiting from large windows and built-in storage. offers generous proportions with large windows that fill the space with natural light. The rooms are decorated in bold, warming colours and are serviced by a family bathroom. An office on this level provides a quiet workspace, perfect for those working from home.



Queens Gate Mews







The second floor houses the principal bedroom; a substantial room with impressive proportions and abundant natural light through well-positioned windows. The room benefits from a spacious walk-in wardrobe and an ensuite bathroom, decorated beautifully with a checked tile floor.





The Design



Decorated by Patrick Williams, of Berdoulat, there is a pleasant combination of high ceilings, wooden floors, and characterful features throughout the house. With a thoughtful layout that creates a sense of sophistication, the contemporary finishes blend seamlessly with the traditional mews character.



The Neighbourhod

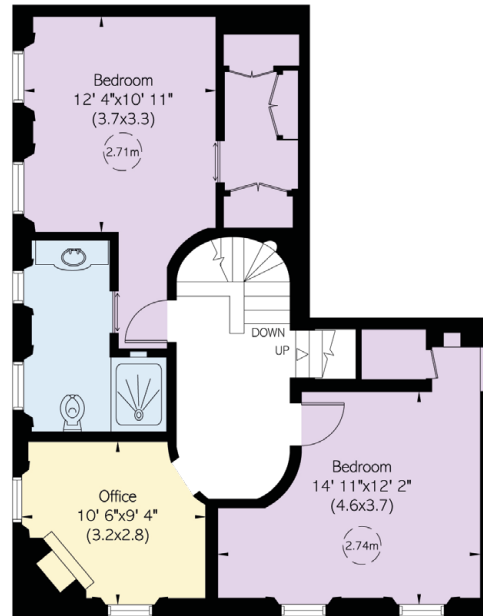
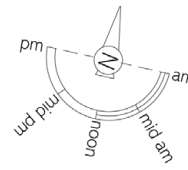
Queens Gate Mews is a picturesque cobbled street in the heart of South Kensington, moments away from the cultural treasures of the Natural History Museum, Victoria and Albert Museum, and the Royal Albert Hall. The location offers excellent transport links with South Kensington Underground station within easy reach, providing access to the District, Circle and Piccadilly lines. The area features upmarket boutiques along Exhibition Road and the Brompton Road, while the open spaces of Hyde Park and Kensington Gardens are a short walk away. This sought-after mews location combines the charm of historic London architecture with the convenience of one of the capital's most prestigious neighbourhoods.

APPROXIMATE INTERNAL AREA

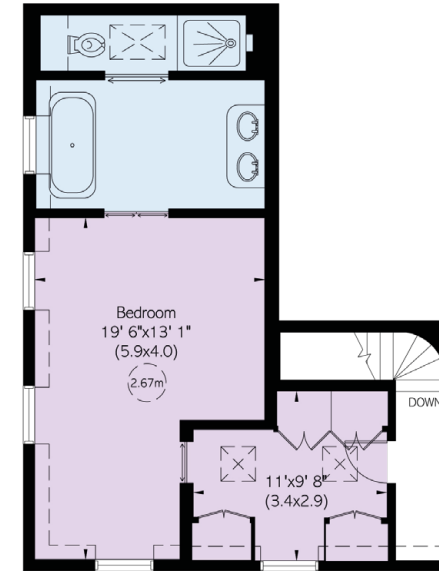
2,376 SQ FT / 221 SQ M

INCLUDING LIMITED USE AREA

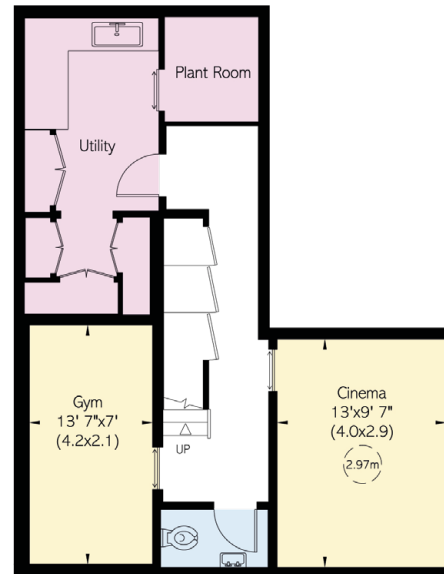
33 SQ FT / 3 SQ M



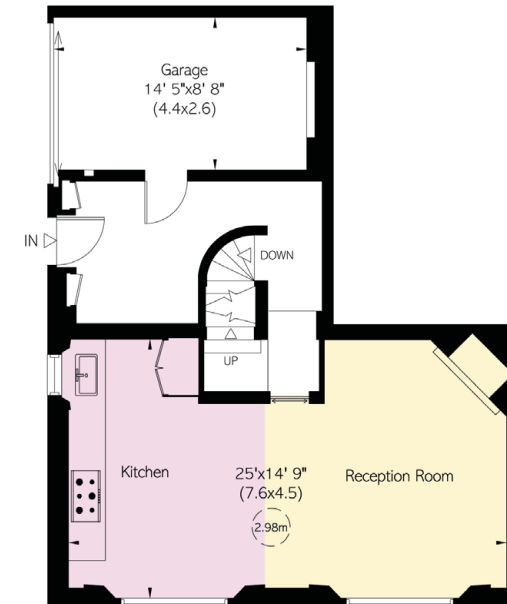
First Floor



Second Floor



Basement



Ground Floor



Contact us

+44 (0) 20 7225 0277

[Email](#)

www.russellsimpson.co.uk

Chelsea

151A Sydney Street
London SW3 6NT

RUSSELL SIMPSON

In accordance with the Property Mis-Description Act 1991, the following details have been prepared in good faith, and are not intended to constitute part of an offer or contract. Any information contained herein (whether in the text, plans or photographs) is given in good faith but should not be relied upon as being a statement of representation of fact. Nothing in these Particulars shall be deemed to be a statement that the property is in good condition or otherwise nor that any services or facilities are in good working order. Any measurements of distances referred to herein are approximate only.
October 2021