

**RUSSELL
SIMPSON**

Charming mews house in prestigious
South Kensington location

QUEENS GATE MEWS
SOUTH KENSINGTON SW7



Queens Gate Mews
South Kensington SW7

£3,000,000

BEDROOMS 1	INTERNAL 1,760 SQ FT	COUNCIL RBKC
RECEPTION ROOMS 3	164 SQ M	COUNCIL TAX Band H
BATHROOMS 2	TENURE Freehold	EPC C



Electrical outlet

Electrical outlet

The Property

A delightfully presented mews house on a secluded cobbled mews

Entering the house, you walk through the entrance hall to the main reception space, a spacious room with large windows filling the space with light. The room features elegant proportions and is positioned opposite to the cosy kitchen, which is fitted with contemporary units and modern appliances.

An imposing curved staircase gives access to the first floor, which houses the principal bedroom across the entire floor. The bedroom benefits from an ensuite bathroom featuring vintage-style fittings, including a standalone bathtub, adding a unique style to space.







Indoor Spaces

The second floor provides additional reception space, which could be re-configured as bedroom. This is a bright room with skylights and windows on either side, creating a light-filled area with neutral décor and built-in storage. A family bathroom completes this floor.

The lower ground level features a media room, providing excellent entertainment space, as well as a separate utility room and guest loo.

The property is presented in superb condition throughout, combining period charm with contemporary comfort. Notable features include high ceilings, wooden floors across the main living areas, and a blend of vintage and modern fixtures.







The Neighbourhood

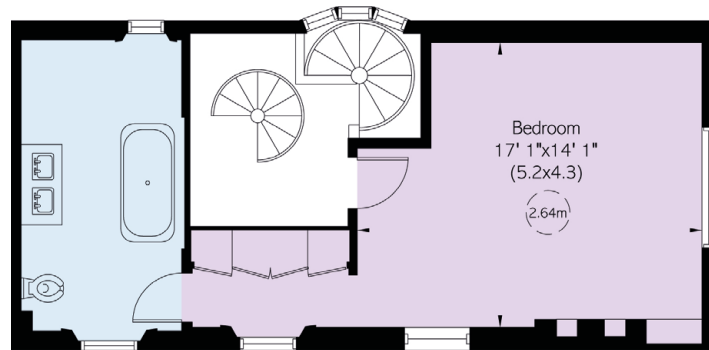
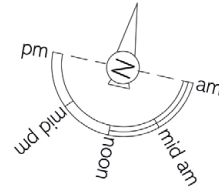
Queens Gate Mews is a picturesque cobbled street in the heart of South Kensington, moments away from the cultural treasures of the Natural History Museum, Victoria and Albert Museum, and the Royal Albert Hall. The location offers excellent transport links with South Kensington Underground station within easy reach, providing access to the District, Circle and Piccadilly lines. The area features upmarket boutiques along Exhibition Road and the Brompton Road, while the open spaces of Hyde Park and Kensington Gardens are a short walk away. This sought-after mews location combines the charm of historic London architecture with the convenience of one of the capital's most prestigious neighbourhoods.

APPROXIMATE INTERNAL AREA

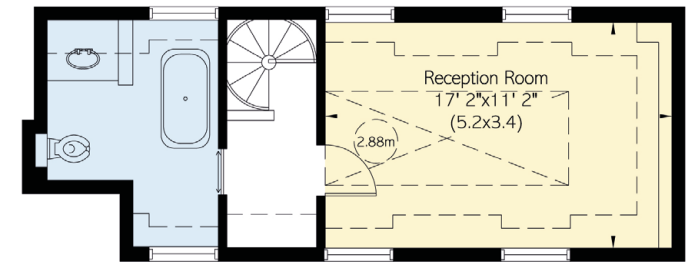
1,760 SQ FT / 164 SQ M

INCLUDING LIMITED USE AREA

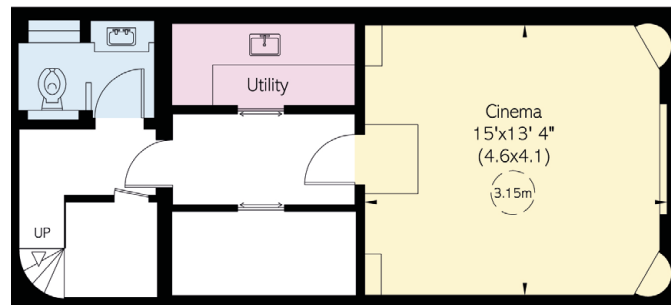
86 SQ FT / 8 SQ M



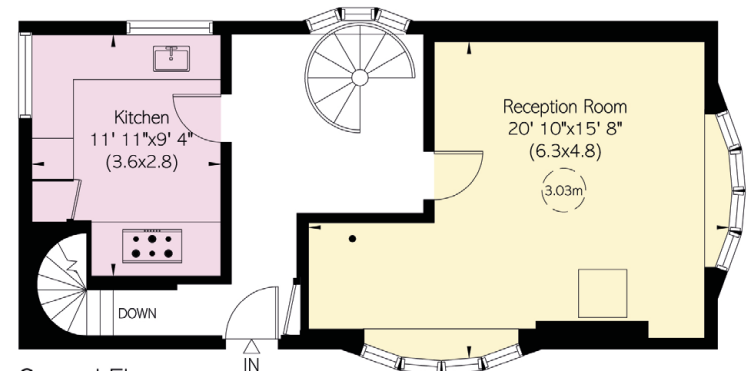
First Floor



Second Floor



Basement



Ground Floor



Contact us

+44 (0) 20 7225 0277

[Email](#)

www.russellsimpson.co.uk

Chelsea

151A Sydney Street
London SW3 6NT

RUSSELL SIMPSON

In accordance with the Property Mis-Description Act 1991, the following details have been prepared in good faith, and are not intended to constitute part of an offer or contract. Any information contained herein (whether in the text, plans or photographs) is given in good faith but should not be relied upon as being a statement of representation of fact. Nothing in these Particulars shall be deemed to be a statement that the property is in good condition or otherwise nor that any services or facilities are in good working order. Any measurements of distances referred to herein are approximate only.
October 2021