



RUSSELL SIMPSON

Superb family home with
luxurious interiors on a
prestigious Kensington street

PALACE GARDENS TERRACE
KENSINGTON W8

Palace Gardens Terrace Kensington W8

£9,350,000

BEDROOMS 4	INTERNAL 3,606 <small>SQ FT</small> 335 <small>SQ M</small>	OUTDOOR 1,289 <small>SQ FT</small>	COUNCIL RBKC
RECEPTION ROOMS 4		EPC E	COUNCIL TAX Band H
BATHROOMS 4	—	TENURE Freehold	



The Property



White stucco townhouse with lofty rooms and a spacious layout close to Kensington Gardens.

Stepping into the house on the raised ground floor, the front hall opens onto a double reception room that runs the entire length of the property. These rooms offer exceptionally high ceilings, while the carved fireplace, wide bow window and ornate cornice gives a sense of splendour. This floor also contains a study with garden views and a balcony that leads down to the garden via a staircase.

The lower ground floor features a generous living space that occupies the entire level. This includes an open-plan kitchen, a formal dining room and an informal sitting area with double French doors leading out into the garden. A guest WC and a utility room complete this floor.



Russell Simpson

Palace Gardens Terrace





Indoor Spaces

The first floor is entirely occupied by the spectacular principal bedroom suite. This includes a bedroom, a pair of bathrooms, and a well-proportioned dressing room. The second floor contains three more bedrooms, one of them ensuite and with the other two bedrooms sharing a bathroom next door. This floor also features air conditioning and considerable storage space.

The whole property is decorated in a sophisticated style. The interiors blend a sense of traditional grandeur with modern convenience.





The Neighbourhood

The paved west-facing garden receives the afternoon light. This is a secluded space with enough room for outdoor dining. There is also a ground floor balcony with a staircase leading down into the garden.

Palace Gardens Terrace is a grand street of white stucco town houses running south from Notting Hill Gate. The street is lined with trees, while the houses are set back from the pavement, giving added privacy.

From here, the open spaces of Kensington Gardens and Hyde Park are a short walk away. In addition, Notting Hill Gate underground station is nearby, while the exclusive restaurants and shops of Kensington High Street are also close.

APPROXIMATE INTERNAL AREA

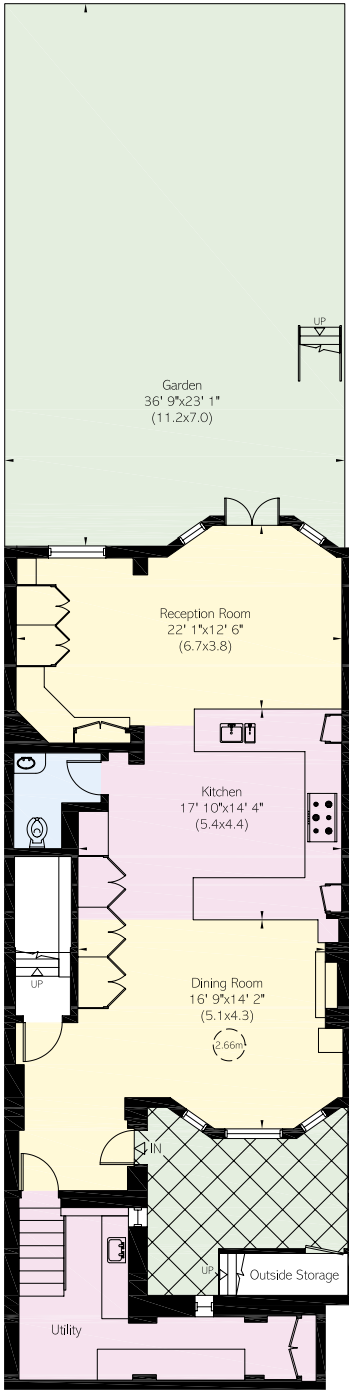
3,606 SQ FT / 335 SQ M

INCLUDING OUTSIDE STORAGE

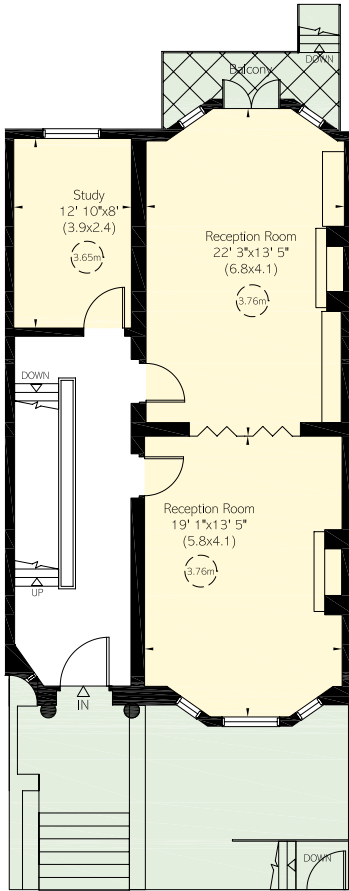
25 SQ FT / 2 SQ M

OUTSIDE AREA

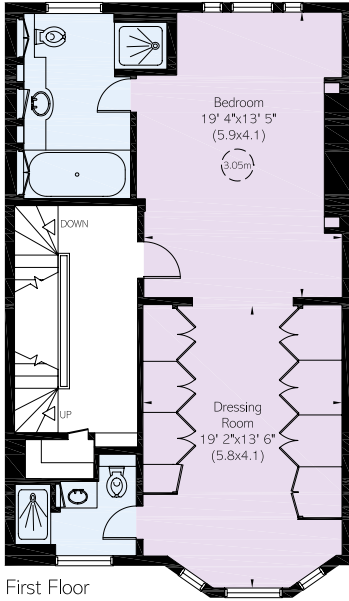
1,289 SQ FT / 120 SQ M



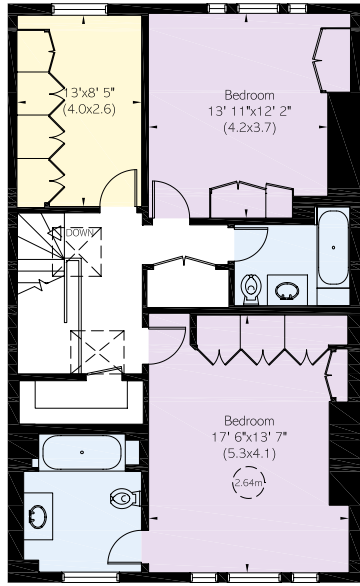
Lower Ground Floor



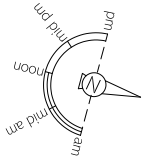
Ground Floor



First Floor



Second Floor



RUSSELL SIMPSON

Contact us

+44 (0) 20 3761 9691

Email

Whatsapp

www.russellsimpson.co.uk

Kensington & Notting Hill

13 Kensington Square

London

W8 5HD

In accordance with the Property Mis-Description Act 1991, the following details have been prepared in good faith, and are not intended to constitute part of an offer or contract.
Any information contained herein (whether in the text, plans or photographs) is given in good faith but should not be relied upon as being a statement of representation of fact.
Nothing in these Particulars shall be deemed to be a statement that the property is in good condition or otherwise nor that any services or facilities are in good working order.
Any measurements of distances referred to herein are approximate only. October 2021