



RUSSELL SIMPSON

Impressive double-fronted
three-bedroom lateral flat
close to the Golborne Road

OXFORD GARDENS
NORTH KENSINGTON W10

Oxford Gardens

North Kensington W10

£1,595,000

BEDROOMS 3	INTERNAL 1,088 SQ FT	COUNCIL RBKC	
RECEPTION ROOMS 1	101 SQ M	EPC D	COUNCIL TAX -
BATHROOMS 2	TENURE Share of Freehold		LENGTH OF LEASE 981 years





The Property



Unusually wide flat with lofty rooms and its own private entrance on a quiet North Kensington street.

Stepping into the flat on the raised ground floor, the front door opens onto the entrance hall. On one side, sliding doors lead into a generous reception room, with high ceilings and a wide bay window.

As well as separate dining and seating areas, an ornate cornice and attractive fireplace add to the sense of elegance. Furthermore, this room flows through to a convenient kitchen with fitted units and a breakfast bar.

With its wide layout and lofty proportions this is an impressive flat presented in excellent condition, having been taken back to brick by the current owner. The restrained interiors, flexibility of configuration and neutral colour scheme add to the sense of light and space.



On the other side of the hall lies a well-proportioned principal bedroom, also with high ceilings and a wide bay window. It includes considerable wardrobe space and an ensuite bathroom with marble tiling.

The flat also offers two more bedrooms, which can be opened into a single, spacious rear bedroom. They share a bathroom in the corridor, along with further storage space.



Russell Simpson

Oxford Gardens





Outdoor Spaces & The Neighbourhood

This semi-detached house is set back from the street with a paved front garden that can be used as a communal space and also gives added privacy.

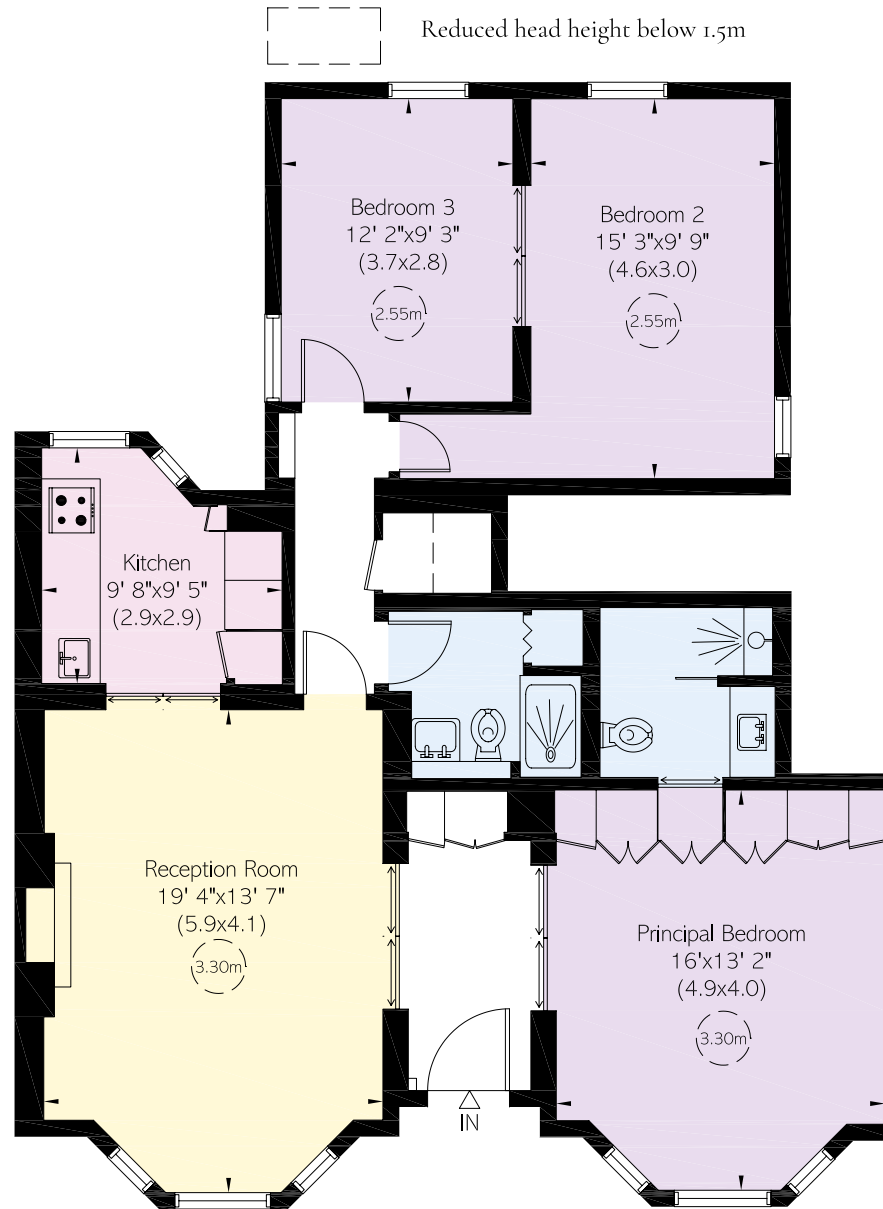
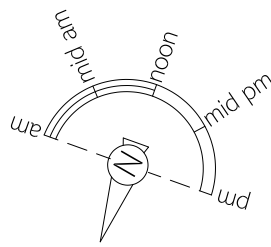
Oxford Gardens is a quiet residential road, lined with trees and Victorian houses. From here, Ladbroke Grove station is close, while Latimer Road is also nearby. In addition, the green spaces of Kensington Memorial Park are within easy reach.

APPROXIMATE INTERNAL AREA

1,088 SQ FT / 101 SQ M

INCLUDING LIMITED USE AREA

8 SQ FT / 1 SQ M



**RUSSELL
SIMPSON**

Contact us

+44 (0) 20 3761 9691

Email

www.russellsimpson.co.uk

Kensington & Notting Hill

13 Kensington Square
London
W8 5HD

In accordance with the Property Mis-Description Act 1991, the following details have been prepared in good faith, and are not intended to constitute part of an offer or contract.
Any information contained herein (whether in the text, plans or photographs) is given in good faith but should not be relied upon as being a statement of representation of fact.
Nothing in these Particulars shall be deemed to be a statement that the property is in good condition or otherwise nor that any services or facilities are in good working order.
Any measurements of distances referred to herein are approximate only. October 2021