



RUSSELL SIMPSON

Elegant two-bedroom
apartment with spacious
terrace in South Kensington

ONSLOW GARDENS
SOUTH KENSINGTON SW7

Onslow Gardens

South Kensington SW7

£4,500,000

BEDROOMS 2	INTERNAL 1,491 <small>SQ FT</small> 138 <small>SQ M</small>	OUTDOOR 498 <small>SQ FT</small>	COUNCIL RBKC
RECEPTION ROOMS 2		EPC C	COUNCIL TAX Band G
BATHROOMS 2	SERVICE CHARGE £11,968 pa	TENURE Share of Freehold	LENGTH OF LEASE 958 years



The Property



A beautifully proportioned apartment set across two floors with impressive ceiling heights and outdoor spaces

Stepping into this charming apartment on the first floor, one is immediately struck by the generous proportions and abundant natural light. The heart of the home is the magnificent reception room, distinguished by its impressive 3.6-metre ceiling height and three large windows that flood the space with light. Period cornicing and architectural details enhance the room's refined character, while double doors lead seamlessly onto a private balcony.





Adjacent to the reception room lies the formal dining area, offering an ideal setting for entertaining, with a wonderful connection to the outdoors, via access to a large terrace. The well-appointed kitchen features sleek cabinetry and integrated appliances, creating a functional cooking environment. Completing this floor is a guest WC.



The Bedrooms

Ascending to the second floor, the apartment offers two substantial bedrooms, each benefiting from their own en-suite bathroom.

Both bedrooms are well-proportioned and bright, while the bathrooms are finished to a high standard with contemporary fixtures and natural stone elements.



Russell Simpson

Onslow Gardens





Outdoor Spaces

The apartment benefits from a private terrace and balcony, providing delightful outdoor retreats. The balcony, accessed directly from the reception room, offers a charming space for morning coffee. The more substantial terrace extends from the dining area and has been thoughtfully arranged with seating areas, creating an excellent space for relaxation surrounded by greenery.

Additionally, residents have access to the superb communal gardens, offering a tranquil green sanctuary in the heart of the city.







The Neighbourhood

Onslow Gardens is a prestigious address in South Kensington, characterised by its handsome period architecture and tree-lined streets.

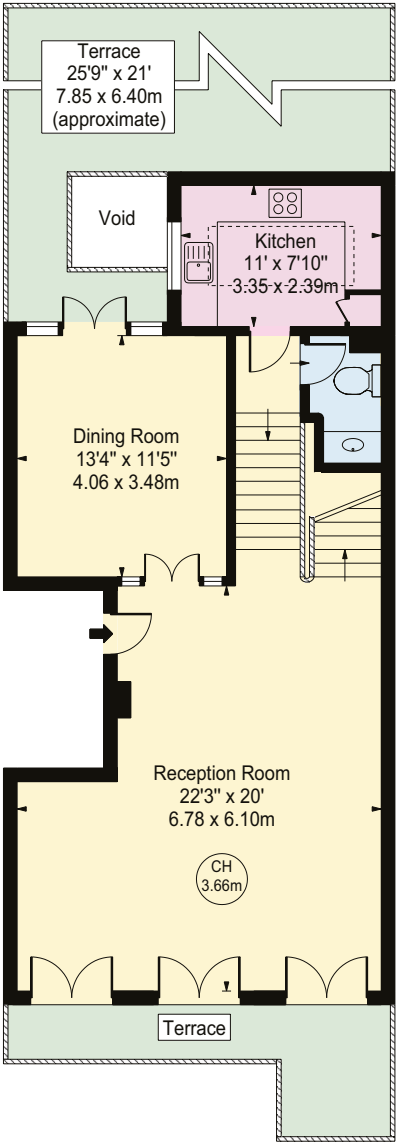
The property is moments away from the excellent amenities of the Fulham Road and Old Brompton Road, offering an array of cafés, restaurants, and boutique shops. South Kensington Underground station is within easy walking distance, providing swift connections across London. The area is also home to the cultural attractions of Exhibition Road, including the Victoria and Albert Museum, Natural History Museum, and Science Museum.

APPROXIMATE INTERNAL AREA

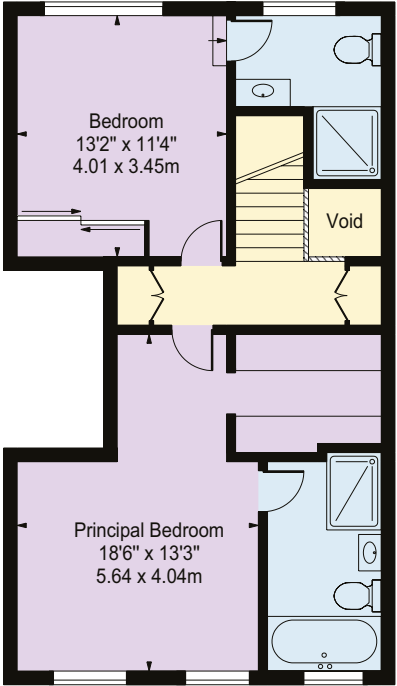
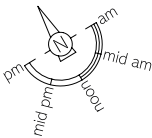
1,491 SQ FT / 138 SQ M

OUTSIDE AREA

498 SQ FT / 46 SQ M



FIRST FLOOR



SECOND FLOOR

RUSSELL SIMPSON

Contact us

+44 (0) 20 7225 0277

Email

www.russellsimpson.co.uk

Chelsea

151A Sydney Street
London
SW3 6NT

View

[Watch the video on YouTube](#)

In accordance with the Property Mis-Description Act 1991, the following details have been prepared in good faith, and are not intended to constitute part of an offer or contract.
Any information contained herein (whether in the text, plans or photographs) is given in good faith but should not be relied upon as being a statement of representation of fact.
Nothing in these Particulars shall be deemed to be a statement that the property is in good condition or otherwise nor that any services or facilities are in good working order.
Any measurements of distances referred to herein are approximate only. October 2021