



## **RUSSELL SIMPSON**

Exceptionally wide six-  
bedroom family home with  
generous off-street parking  
and garage

NETHERTON GROVE  
CHELSEA SW10

# Netherton Grove

## Chelsea SW10

£6,750,000

BEDROOMS 6	INTERNAL 4,261 <small>SQ FT</small>	OUTDOOR 2,523 <small>SQ FT</small>	COUNCIL RBKC
RECEPTION ROOMS 4	396 <small>SQ M</small>	EPC D	COUNCIL TAX Band H
BATHROOMS 4	—	TENURE Freehold	







# The Property



Impressive double-fronted house with a spacious layout, traditional interiors and a west-facing garden.

Entering the house on the raised ground floor, the front door opens directly onto a large entrance hall/dining room with double doors flowing through to the fitted kitchen. This floor also contains an elegant drawing room running the entire length of the property, with a double aspect formed by a bay window at the front and a French door at the rear, leading onto the terrace. A guest WC completes this floor.









Thanks to its end of terrace position, this much-loved family home is wonderfully wide. This results in a spacious layout, decorated in a traditional style to suit its grand proportions.

The lower ground floor features another large reception room. This is a more informal space, with a kitchenette, considerable storage, and an ensuite bathroom. This floor also contains a bedroom with French doors leading out into the garden, as well as street and garage access. As a result, it could be used as a separate self-contained flat.









# The Bedrooms

The first floor contains a well-proportioned principal bedroom suite, including his and her dressing rooms and a pair of bathrooms. There is one more bedroom on this floor, and another three on the floor above. The second floor also contains a study, a shared bathroom and a separate kitchen, ideal for a live in housekeeper/nanny.



Russell Simpson

Netherton Grove









# Outdoor Spaces

The property is a double-fronted Victorian villa with a west-facing rear garden. This includes a lawn, planted flowerbeds and paved area for outdoor seating, and it can be accessed from the terrace above. Furthermore, the house is set back from the street, with a front garden giving off-street parking. There is also a garage, providing space for three cars in total.



Russell Simpson

Netherton Grove







# The Neighbourhood

Netherton Grove is a quiet cul-de-sac close to the Fulham Road. From here, Fulham Broadway underground station is close, while the King's Road is also nearby. In addition, the tree-lined avenues and Victorian tombs of Brompton Cemetery are a short walk away.



APPROXIMATE INTERNAL AREA

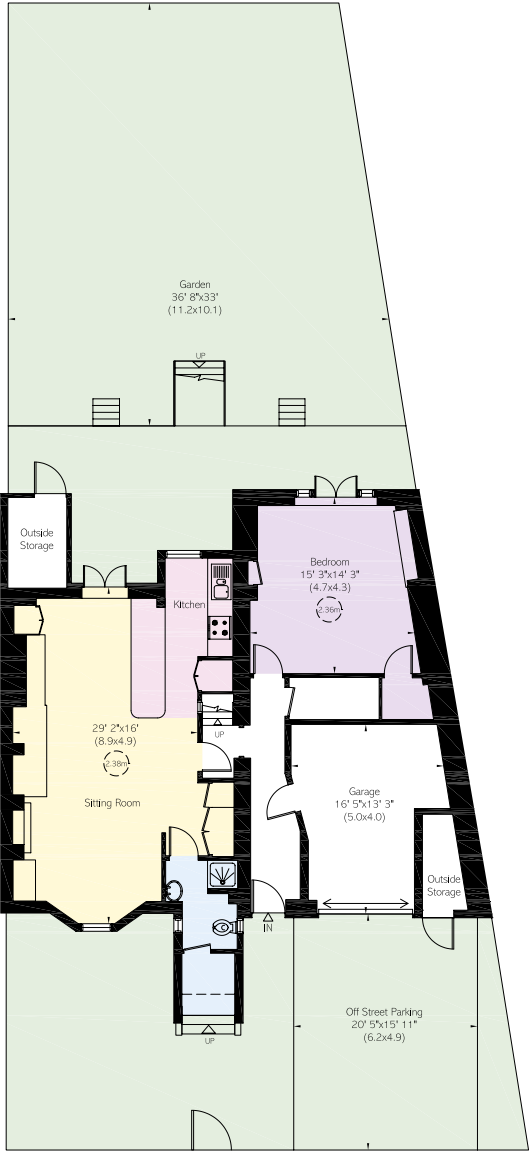
4,261 SQ FT / 396 SQ M

INCLUDING LIMITED UAE AREA,  
OUTSIDE STORAGES & GARAGE

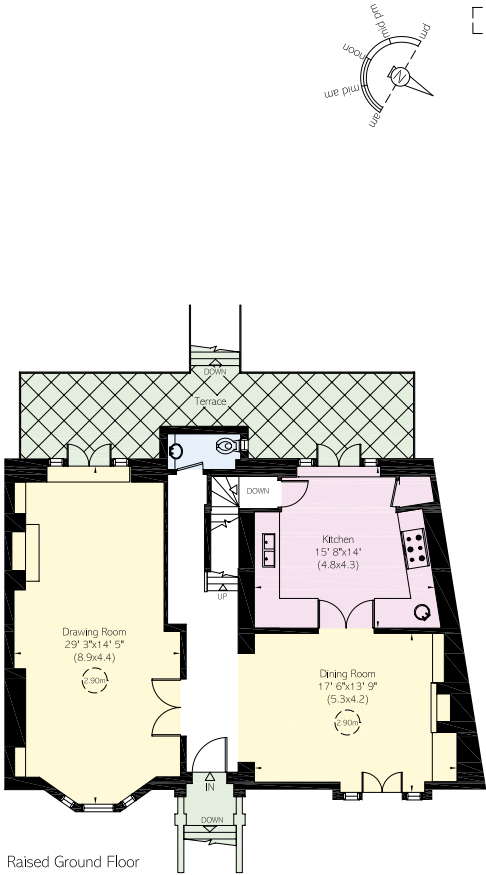
259 SQ FT / 24 SQ M

OUTSIDE AREA

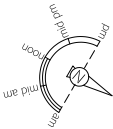
2,523 SQ FT / 234 SQ M



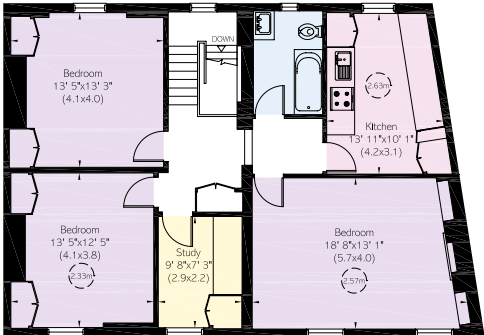
Lower Ground Floor



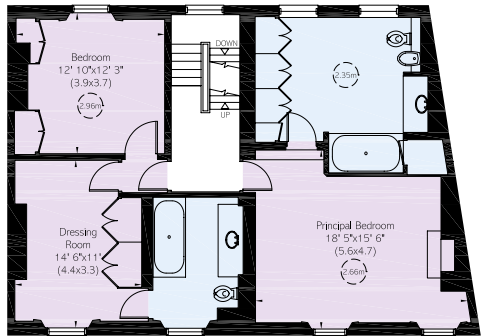
Raised Ground Floor



Reduced head height below 1.5m



Second Floor



First Floor



# RUSSELL SIMPSON



---

## Contact us

+44 (0) 20 7225 0277

Email

[www.russellsimpson.co.uk](http://www.russellsimpson.co.uk)

---

## Chelsea

151A Sydney Street

London

SW3 6NT

---

## View

[Watch the video on YouTube](#)

In accordance with the Property Mis-Description Act 1991, the following details have been prepared in good faith, and are not intended to constitute part of an offer or contract. Any information contained herein (whether in the text, plans or photographs) is given in good faith but should not be relied upon as being a statement of representation of fact. Nothing in these Particulars shall be deemed to be a statement that the property is in good condition or otherwise nor that any services or facilities are in good working order. Any measurements of distances referred to herein are approximate only. October 2021