



RUSSELL SIMPSON

Beautifully renovated four-bedroom family home with south-facing garden and graceful interiors

KINGSBRIDGE ROAD
NORTH KENSINGTON W10

Kingsbridge Road North Kensington W10

£4,000,000

BEDROOMS 4	INTERNAL 2,593 SQ FT 241 SQ M	OUTDOOR 1,686 SQ FT	COUNCIL RBKC
RECEPTION ROOMS 3		EPC D	COUNCIL TAX Band G
BATHROOMS 3		TENURE Freehold	





The Property



Thoughtfully designed and decorated house with light-filled kitchen close to Ladbroke Grove station.

Stepping into the house on the ground floor, the front hall opens onto a generous reception room. This includes high ceilings, a broad bay window, a working stove fireplace and two separate seating areas. Next door is a guest WC and a convenient utility room.



Indoor Spaces

This floor also contains a superb open-plan kitchen with wooden units, stone worktops and a central island. It flows through to a family dining area and an informal seating area, while overhead skylights fill the space with light. In addition, sliding south-facing French windows frame a beautiful view of the garden and lead out onto the patio.







The first floor features a generous and attractive principal bedroom suite with bedroom, dressing room and a beautifully tiled bathroom offering both shower and bath. The rest of the floor features a lofty bedroom, a bathroom and a study.

The second floor offers two more bedrooms, both with considerable wardrobe space. They share a bathroom.



The Design

The house has been recently renovated in a tasteful, natural style that combines comfort and elegance. It results in bright and calm interiors presented in immaculate condition with underfloor heating throughout.





Outdoor Spaces

The house includes an expansive south-facing garden with a lawn, planted borders and a paved patio area for outdoor dining. It is also set back from the street with a front garden, providing added privacy.

The Neighbourhood

Kingsbridge Road is a quiet residential street, lined with trees and semi-detached properties of red brick. From here, Ladbroke Grove station is close, while Latimer Road is also nearby. In addition, the green spaces of Kensington Memorial Park are within easy reach.





Kingsbridge Road, W10

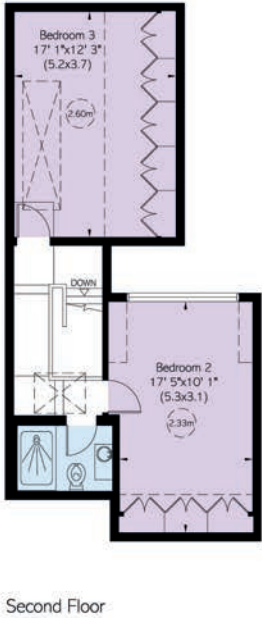
**RUSSELL
SIMPSON**

Approximate Internal Area
3,593 sq ft / 334 sq m

Including limited use area
131 sq ft / 12 sq m

Outside Area
1,686 sq ft / 157 sq m

This plan is for layout guidance only. Not drawn to scale unless stated. Windows and door openings are approximate. Whilst every care is taken in the preparation of this plan, please check all dimensions, shapes, and compass bearings before making any decisions reliant upon them.



RUSSELL SIMPSON

Contact us

+44 (0) 20 3761 9691

Email

Whatsapp

www.russellsimpson.co.uk

Kensington & Notting Hill

13 Kensington Square
London
W8 5HD

In accordance with the Property Mis-Description Act 1991, the following details have been prepared in good faith, and are not intended to constitute part of an offer or contract.
Any information contained herein (whether in the text, plans or photographs) is given in good faith but should not be relied upon as being a statement of representation of fact.
Nothing in these Particulars shall be deemed to be a statement that the property is in good condition or otherwise nor that any services or facilities are in good working order.
Any measurements of distances referred to herein are approximate only. October 2021