



# RUSSELL SIMPSON

Unique former dairy with  
lofty living spaces and  
bright, creative interiors

HEWER STREET  
NORTH KENSINGTON W10

# Hewer Street North Kensington W10

£3,750,000

BEDROOMS 3	INTERNAL 2,906 <small>SQ FT</small>  270 <small>SQ M</small>	OUTDOOR 231 <small>SQ FT</small>	COUNCIL RBKC
RECEPTION ROOMS 3		EPC D	COUNCIL TAX Band G
BATHROOMS 3	—	TENURE Freehold	









# The Property



Exceptionally stylish property in a beautifully reimagined Victorian industrial space near Golborne Road

Entering the house on the ground floor, a tapered hallway draws the eye towards the impressive atrium, soaring 7.5 meters to the roof level. This central area houses a study, with a single sheet, cantilevered metal staircase leading to the first floor living area resulting in a contemporary, urban aesthetic.







This exceptionally generous lateral space includes an open-plan kitchen with breakfast bar, as well as separate dining and seating areas, along with an informal television nook. It also features a large bathroom with a jacuzzi bath, additional storage and utility room, and two mezzanines – one a conservatory-like room with access to the roof terrace.

Double-height ceilings give an exceptional sense of volume and add to the impression of creative flexibility. Meanwhile, wooden floors and rafters recall the building's Victorian heritage and overhead skylights flood this area with brightness



Russell Simpson

Hewer Street







Downstairs, the principal bedroom offers a dressing room and an ensuite bathroom. The other two bedrooms share a bathroom with a bath, and form self-contained suites complete with an additional study/living area and polished concrete flooring.







# The Neighbourhood

The property includes a roof terrace with ample space for outdoor dining.

Hewer Street is a creative enclave near the northern end of the Portobello Road with a secluded, village-like atmosphere. It is lined with a mix of terrace houses and a former Victorian laundry and dairy. This has been brilliantly reimaged by architects and designers to create warehouse-like living spaces that are exceptionally rare in West London.

From here, Ladbroke Grove underground station is close, while the many restaurants and shops of Golborne Road and Portobello Road are within easy reach. Furthermore, the area contains several good schools and popular family spaces like Jaego's House. Finally, the picturesque towpath of the Grand Union Canal is also nearby.



APPROXIMATE INTERNAL AREA

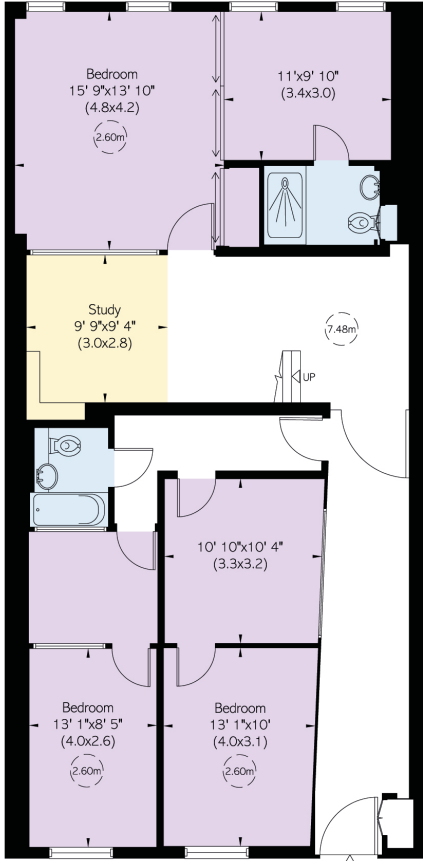
2,906 SQ FT / 270 SQ M

INCLUDING LIMITED USE AREA

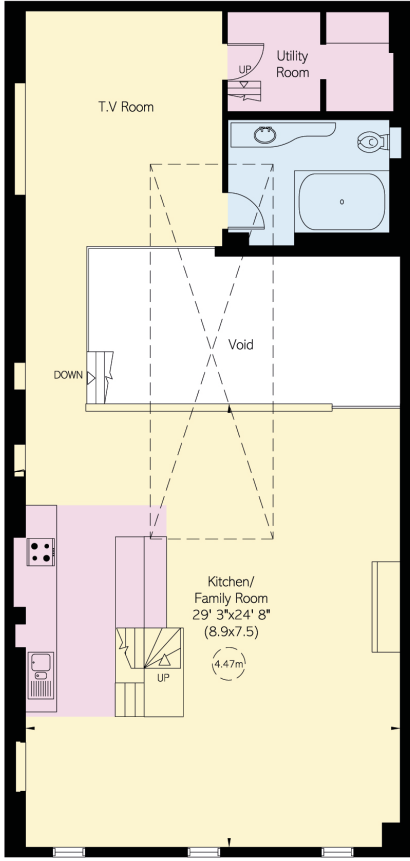
81 SQ FT / 8 SQ M

OUTSIDE AREA

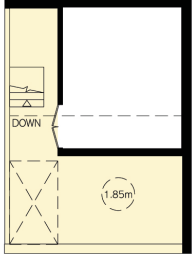
231 SQ FT / 21 SQ M



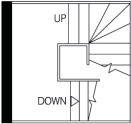
Ground Floor



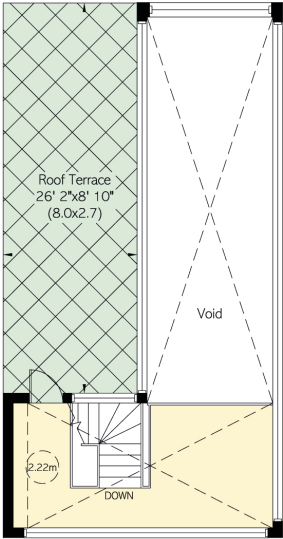
First Floor



Mezzanine



Reduced head height below 1.5m



Roof Level



**RUSSELL  
SIMPSON**

---

## Contact us

+44 (0) 20 3761 9691

Email

[www.russellsimpson.co.uk](http://www.russellsimpson.co.uk)

---

## Kensington & Notting Hill

13 Kensington Square

London

W8 5HD

---

## View

[Watch the video on YouTube](#)

In accordance with the Property Mis-Description Act 1991, the following details have been prepared in good faith, and are not intended to constitute part of an offer or contract.  
Any information contained herein (whether in the text, plans or photographs) is given in good faith but should not be relied upon as being a statement of representation of fact.  
Nothing in these Particulars shall be deemed to be a statement that the property is in good condition or otherwise nor that any services or facilities are in good working order.  
Any measurements of distances referred to herein are approximate only. October 2021