



## **RUSSELL SIMPSON**

Unique three-bedroom house  
with exceptionally decorated  
interiors moments away from  
the Portobello Road

DENBIGH TERRACE  
NOTTING HILL W11

# Denbigh Terrace

## Notting Hill W11

£3,950,000

BEDROOMS 3	INTERNAL 1,643 SQ FT  153 SQ M	OUTDOOR 417 SQ FT	COUNCIL RBKC
RECEPTION ROOMS 2		EPC C	COUNCIL TAX Band G
BATHROOMS 2		TENURE Freehold	





# The Property



Beautiful family home with light-filled living spaces on a colourful street in the heart of Notting Hill.

Entering the house on the raised ground floor, the front door opens directly onto a generous reception room that runs the entire length of the property. As well as space for a study and seating area, a double-height south-facing glazed extension fills this space with light.

The property has been decorated in a unique style, that blends elegant wallpaper and colourful features. It is presented in excellent condition with underfloor heating throughout and air conditioning in the bedrooms. The result is an exceptionally playful, tasteful and comfortable home.







# Indoor Spaces

Downstairs is a spacious kitchen with central island breakfast bar and sliding French doors that lead out into the garden.

Thanks to an internal void, it shares the brightness from the glazed extension. This floor also features a dining room, a guest WC and separate street access via the front patio.



Russell Simpson

Denbigh Terrace











## The Bedrooms

The first floor is entirely occupied by the principal bedroom suite, including a bedroom, a bathroom with a bath and corridor dressing room. There is a second bathroom on the half-landing, and two more bedrooms on the top floor.









# The Neighbourhood

The property includes a paved south-facing garden.

Denbigh Terrace is a charming street off the Portobello Road lined with picturesque terrace houses painted pastel colours. From here, Notting Hill Gate underground station is a short walk away, while the neighbourhood's many restaurants and shops are also nearby. In addition, the open spaces of Kensington Gardens and Hyde Park are within easy reach.



APPROXIMATE INTERNAL AREA

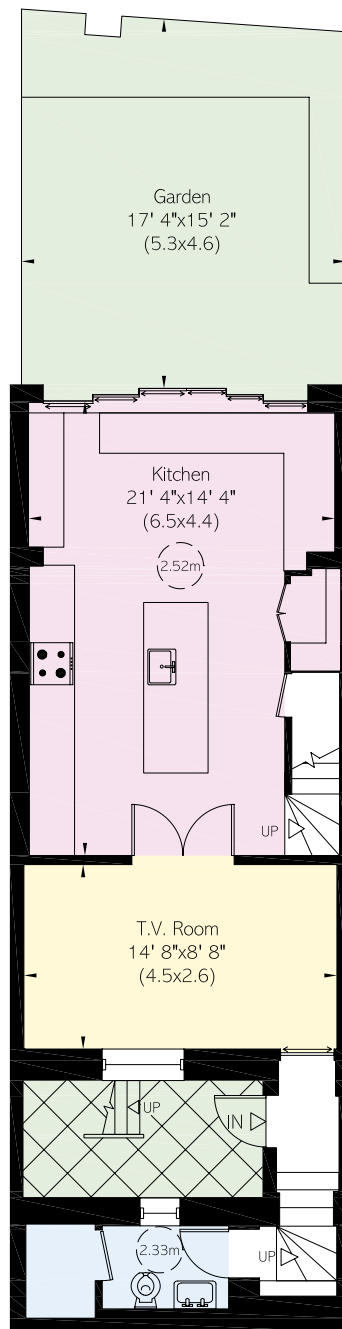
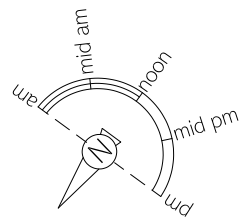
1,643 SQ FT / 153 SQ M

INCLUDING LIMITED USE AREA

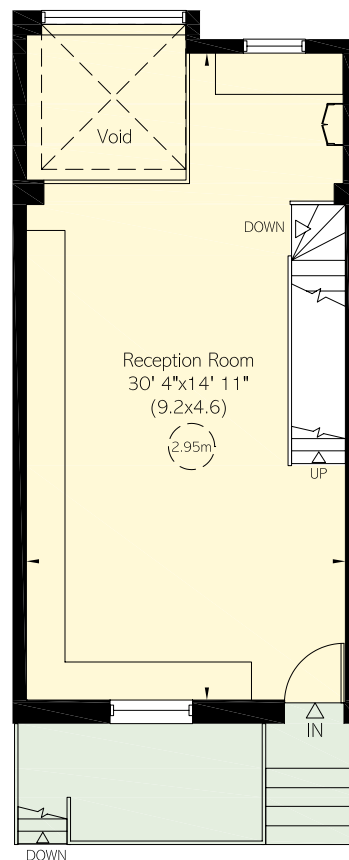
27 SQ FT / 3 SQ M

OUTSIDE AREA

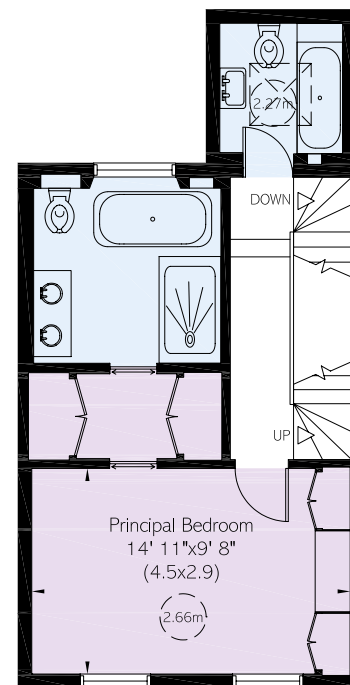
417 SQ FT / 39 SQ M



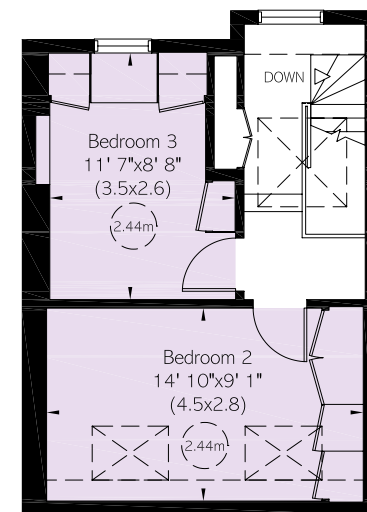
Lower Ground Floor



Raised Ground Floor



First Floor



Second Floor



# RUSSELL SIMPSON

---

## Contact us

+44 (0) 20 3761 9691

[Email](#)

[Whatsapp](#)

[www.russellsimpson.co.uk](http://www.russellsimpson.co.uk)

---

## Kensington & Notting Hill

13 Kensington Square  
London  
W8 5HD

---

## View

[Watch the video on YouTube](#)

In accordance with the Property Mis-Description Act 1991, the following details have been prepared in good faith, and are not intended to constitute part of an offer or contract.  
Any information contained herein (whether in the text, plans or photographs) is given in good faith but should not be relied upon as being a statement of representation of fact.  
Nothing in these Particulars shall be deemed to be a statement that the property is in good condition or otherwise nor that any services or facilities are in good working order.  
Any measurements of distances referred to herein are approximate only. October 2021