

RUSSELL SIMPSON

Newly renovated apartment with porter
and lift in gated mansion block

CHEYNE COURT
CHELSEA SW3



Cheyne Court
Chelsea SW3

£3,250,000

BEDROOMS 3	INTERNAL 1,487 SQ FT	SERVICE CHARGE £11,000 pa	COUNCIL RBKC
RECEPTION ROOMS 2	138 SQ M	EPC D	COUNCIL TAX Band G
BATHROOMS 2	TENURE Share of Freehold		LENGTH OF LEASE 986 years



The Property

Impressive three-bedroom lateral apartment

Upon entering, you step into a welcoming entrance hall that provides access to all principal rooms. The generous reception room features large windows that fill the space with natural light and create an impressive sense of scale which continues into the adjacent dining room.

The kitchen is thoughtfully positioned and fitted with contemporary units, featuring marble countertops. A cosy breakfast nook provides space for informal dining.







The Master Suite

The principal bedroom is a substantial double room featuring large fitted wardrobes. A bathroom sits within this master suite, including luxurious twin sinks set into a marble vanity, a large shower area and finished with sophisticated fixtures that add warmth to the design.

Further Bedrooms

Separated from the master suite via an adjoining corridor, the second and third bedrooms are both served by a spacious family bathroom and guest WC, and benefit from fitted storage. Throughout the apartment, the newly completed renovation is evident in the quality of finishes, from the carefully selected materials to the thoughtful lighting design, including stylish wall-mounted sconces and contemporary pendant fixtures.





The Design

The apartment showcases sophisticated contemporary interiors. Beautifully designed by Studio Squire, period features have been carefully preserved and enhanced, including elegant architectural details and well-proportioned rooms that create a sense of grandeur. The property benefits from wooden flooring throughout the main living areas, while the bathrooms feature bespoke marble finishes and Lefroy Brooks sanitaryware that reflect the high standard of the renovation work.

The renovation works include the full replacement of plumbing and electrical systems to modern best-in-class standards. High specification acoustic insulation has been installed, in addition to bespoke kitchen and bedroom joinery, complemented by Miele appliances.

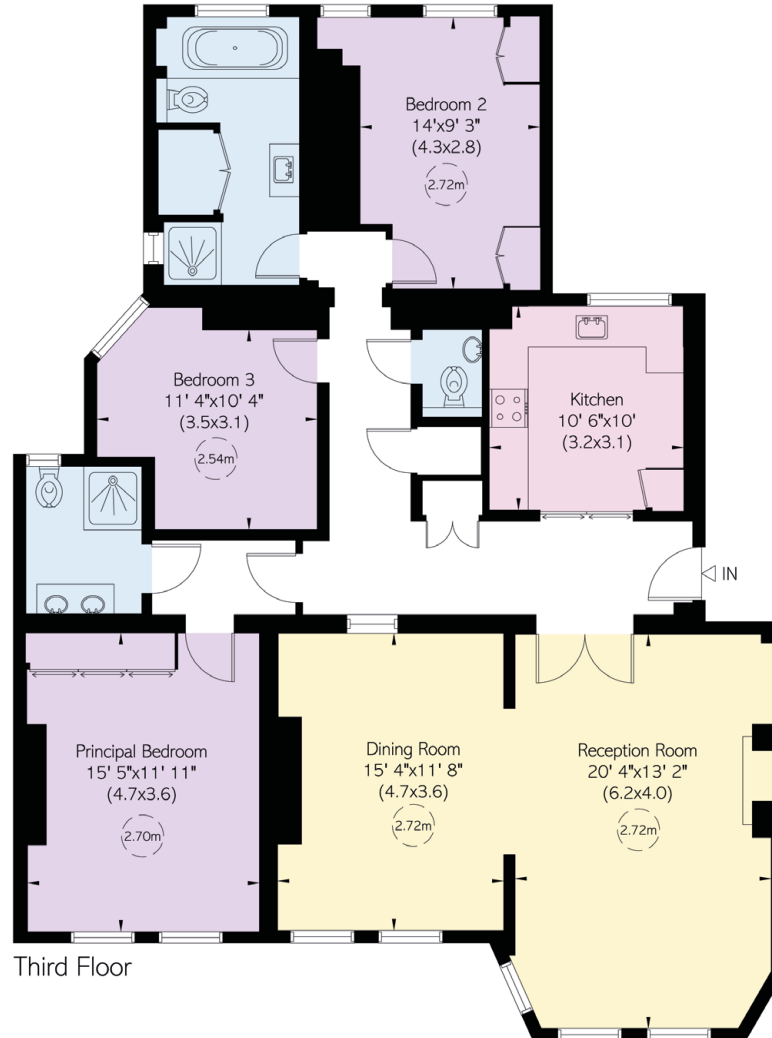


The Neighbourhood

Cheyne Court is an attractive red brick mansion block located in the heart of Chelsea, moments away from the King's Road with its upmarket boutiques, restaurants and cafes. The location offers excellent transport links with Sloane Square Underground station within easy walking distance, providing access to the Circle and District lines. The property is close to the open spaces of Battersea Park across the Thames, while the Royal Hospital Chelsea and its beautiful grounds are nearby. The area is renowned for its village-like atmosphere within central London, with the Chelsea Physic Garden and the fashionable shops and galleries of the King's Road all within easy reach.

APPROXIMATE INTERNAL AREA

1,487 SQ FT / 138 SQ M





Contact us

+44 (0) 20 7225 0277

[Email](#)

www.russellsimpson.co.uk

Chelsea

151A Sydney Street

London SW3 6NT

RUSSELL SIMPSON

In accordance with the Property Mis-Description Act 1991, the following details have been prepared in good faith, and are not intended to constitute part of an offer or contract. Any information contained herein (whether in the text, plans or photographs) is given in good faith but should not be relied upon as being a statement of representation of fact. Nothing in these Particulars shall be deemed to be a statement that the property is in good condition or otherwise nor that any services or facilities are in good working order. Any measurements of distances referred to herein are approximate only.
October 2021