



RUSSELL SIMPSON

Superb three-bedroom
lateral flat with south-facing
rooms in a prestigious
building near Holland Park

CAMPDEN HILL GATE
KENSINGTON W8

Campden Hill Gate Kensington W8

£3,350,000

BEDROOMS 3	INTERNAL 1,763 <small>SQ FT</small> 164 <small>SQ M</small>	SERVICE CHARGE £12,806 pa	COUNCIL RBKC
RECEPTION ROOMS 2		EPC C	COUNCIL TAX Band H
BATHROOMS 3	—	TENURE Leasehold	LENGTH OF LEASE 899 years





The Property



Spacious and tastefully decorated flat with light-filled interiors and communal garden access

Entering the flat on the fifth floor, the front hall leads down to an impressive double reception room. This is separated into dining and seating areas, while south-facing windows fill the space with light. Next door is a convenient kitchen with fitted wooden units and a breakfast bar.







The flat also contains three bedrooms. The principal bedroom has an ensuite bathroom and a walk-in wardrobe. The other two bedrooms are also ensuite, and all of the bathrooms contain baths. The entrance hall features a large bay window and a guest WC.

Thanks to the building's height, the many south-facing windows offer uninterrupted views across the rooftops of the Phillimore estate and towards the Surrey Hills. And the whole property is decorated in a tasteful traditional style that emphasises the grandeur of the setting.



The Neighbourhood

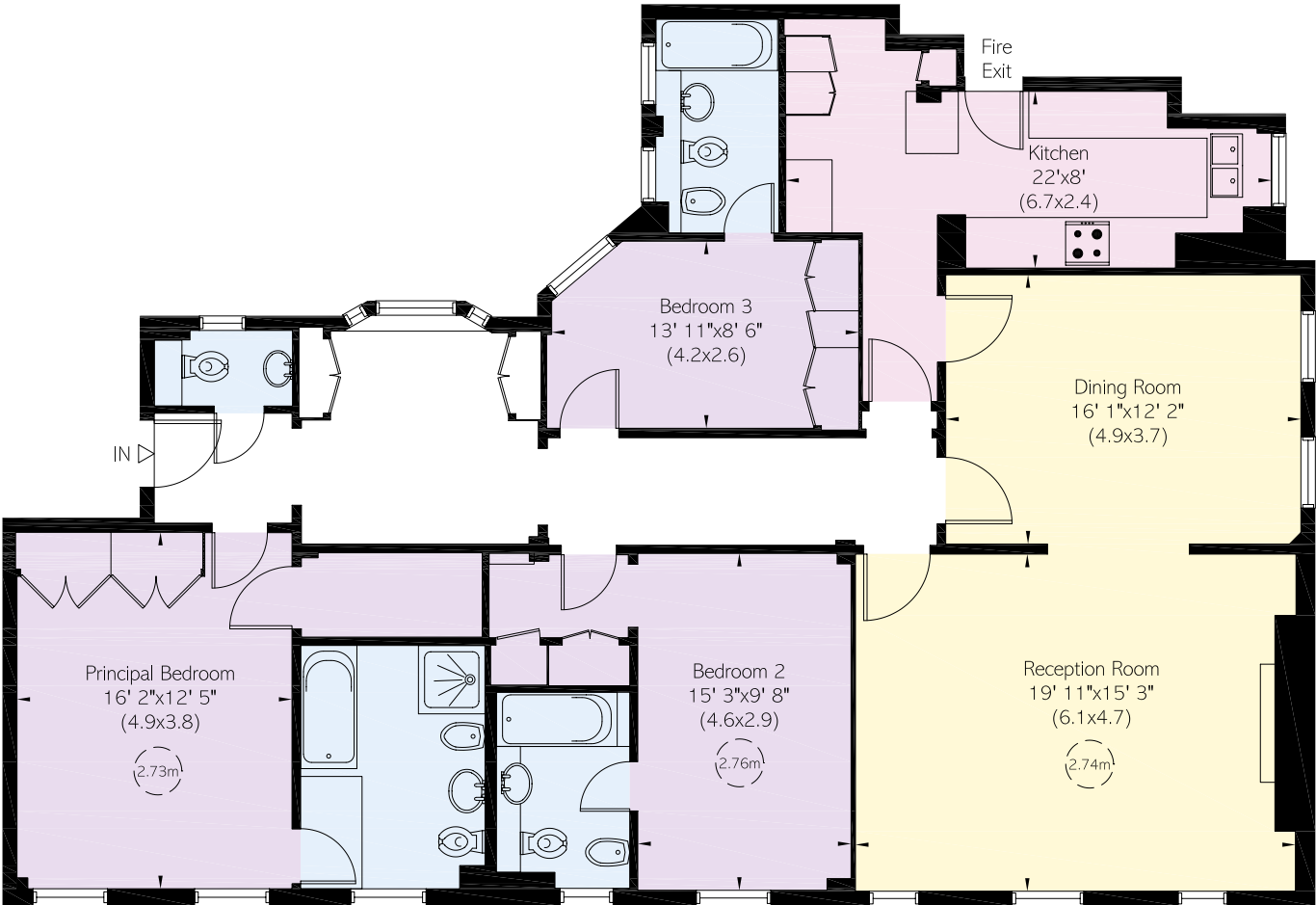
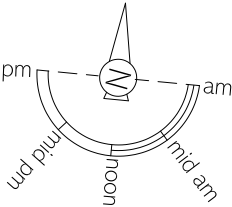
Campden Hill Gate is one of the most sought-after mansion blocks in Kensington. Built in the interwar period in the neo-Georgian style, it offers residents a porter, a lift, and a beautiful communal garden.

From here, the open spaces of Holland Park are close. Furthermore, Kensington High Street is within walking distance, with its range of restaurants, shops and underground station.



APPROXIMATE INTERNAL AREA

1,763 SQ FT / 164 SQ M



Fifth Floor

RUSSELL SIMPSON

Contact us

+44 (0) 20 3761 9691

Email

www.russellsimpson.co.uk

Kensington & Notting Hill

13 Kensington Square

London

W8 5HD

View

[Watch the video on YouTube](#)

In accordance with the Property Mis-Description Act 1991, the following details have been prepared in good faith, and are not intended to constitute part of an offer or contract.
Any information contained herein (whether in the text, plans or photographs) is given in good faith but should not be relied upon as being a statement of representation of fact.
Nothing in these Particulars shall be deemed to be a statement that the property is in good condition or otherwise nor that any services or facilities are in good working order.
Any measurements of distances referred to herein are approximate only. October 2021