



RUSSELL SIMPSON

Elegant Victorian family
home in Pimlico

CAMBRIDGE STREET
PIMLICO SW1V

Cambridge Street
Pimlico SW1V

£2,950,000

BEDROOMS 5	INTERNAL 2,558 <small>SQ FT</small> 127 <small>SQ M</small>	OUTDOOR 110 <small>SQ FT</small>	COUNCIL Westminster
RECEPTION ROOMS 3		EPC D	COUNCIL TAX Band H
BATHROOMS 2	—	TENURE Freehold	



The Property



A beautifully presented Victorian terraced house offering versatile family accommodation across five floors

Stepping into this charming family home, the ground floor entrance hall leads to a well-proportioned dining room, featuring elegant period details and generous natural light from large sash windows. The connecting study provides a quiet workspace with fitted bookshelves and traditional architectural features. A separate kitchen/ pantry completes this floor.



The Reception Room

The first floor houses a superb double reception room, thoughtfully arranged to create distinct seating areas whilst maintaining an open, light-filled feel. Large sash windows open onto a delightful balcony. This floor also benefits from a guest WC and access to a rear terrace.







The lower ground floor offers exceptional flexibility with a second reception room that serves beautifully as a family sitting room or entertainment space. This level features its own kitchen with direct access to the private garden. Two useful cellars provide excellent storage.







The second floor is dedicated to the principal bedroom suite, featuring a spacious double bedroom with period windows, a separate dressing room offering abundant fitted storage, and a well-appointed bathroom with modern fixtures.

The third floor accommodates three additional bedrooms, each with good natural light and fitted cupboards, served by a shared family bathroom.





The Neighbourhood

Cambridge Street is a quiet residential address in the heart of Pimlico, characterised by elegant Victorian terraced houses. The tree-lined street maintains a village-like atmosphere whilst being moments away from the excellent transport links of Victoria Station. The area offers superb local amenities including the boutique shops and restaurants of Warwick Way, whilst Pimlico Road provides access to renowned antique dealers and interior design showrooms.

Cambridge Street is within walking distance of several excellent schools, the library, swimming pool and the beautiful gardens of Warwick Square and Ecclestone Square

APPROXIMATE INTERNAL AREA

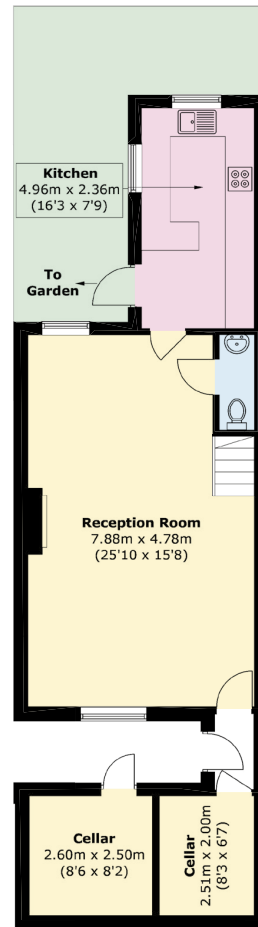
2,558 SQ FT / 237 SQ M

EXTERNAL STORAGE

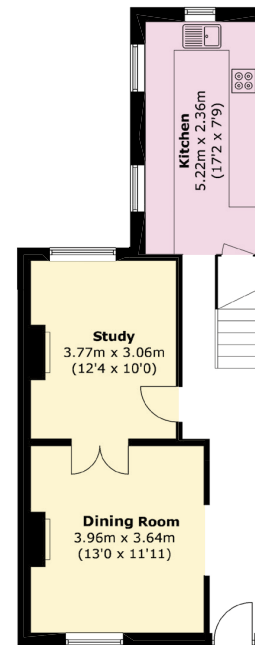
72 SQ FT / 6.7 SQ M

OUTSIDE AREA

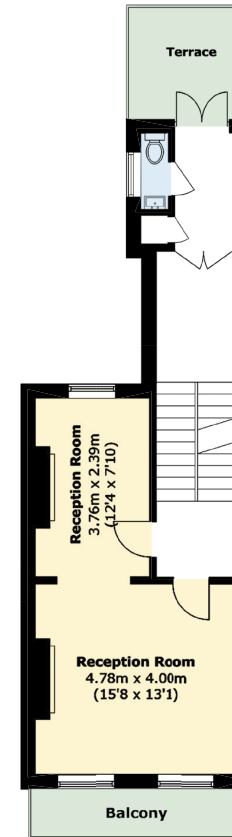
110.9 SQ FT / 10 SQ M



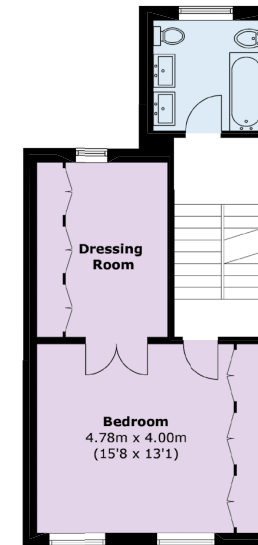
LOWER GROUND FLOOR



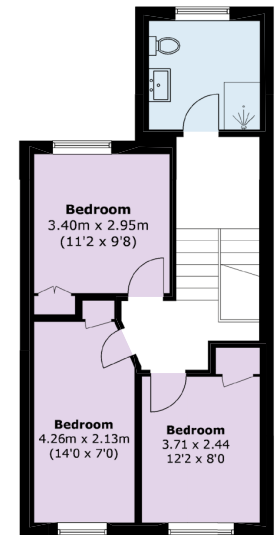
GROUND FLOOR



FIRST FLOOR



SECOND FLOOR



THIRD FLOOR

RUSSELL SIMPSON

Contact us

+44 (0) 20 7225 0277

Email

www.russellsimpson.co.uk

Chelsea

151A Sydney Street

London

SW3 6NT

View

[Watch the video on YouTube](#)

In accordance with the Property Mis-Description Act 1991, the following details have been prepared in good faith, and are not intended to constitute part of an offer or contract.
Any information contained herein (whether in the text, plans or photographs) is given in good faith but should not be relied upon as being a statement of representation of fact.
Nothing in these Particulars shall be deemed to be a statement that the property is in good condition or otherwise nor that any services or facilities are in good working order.
Any measurements of distances referred to herein are approximate only. October 2021