

RUSSELL SIMPSON

Newly completed four-bedroom family
home with stylish contemporary
interiors and garage parking

BRIDSTOW PLACE
NOTTING HILL W2



Bridstow Place
 Notting Hill W2

£8,000,000

<p>BEDROOMS 4</p>	<p>INTERNAL 4,255 SQ FT</p> <p>395 SQ M</p>	<p>PARKING Garage</p>	<p>COUNCIL Westminster</p>
<p>RECEPTION ROOMS 4</p>		<p>EPC B</p>	<p>COUNCIL TAX Band -</p>
<p>BATHROOMS 4</p>		<p>TENURE Freehold</p>	<p>AMENITIES Lift</p>



The Property

Modern house with lift, gym and home cinema on a delightful address close to Westbourne Grove.

Entering the house on the ground floor, the front hall leads into a generous living space. This includes an open-plan kitchen with Miele appliances, a central island breakfast bar and a dining room. This level also features a guest WC and garage.

The lower ground floor consists of a well-proportioned reception room with a study or additional bedroom opposite. Light shafts, glazing and crittal glass doors increase the sense of light and space. Downstairs is gym, utility room and another guest WC. This level also features a family cinema.





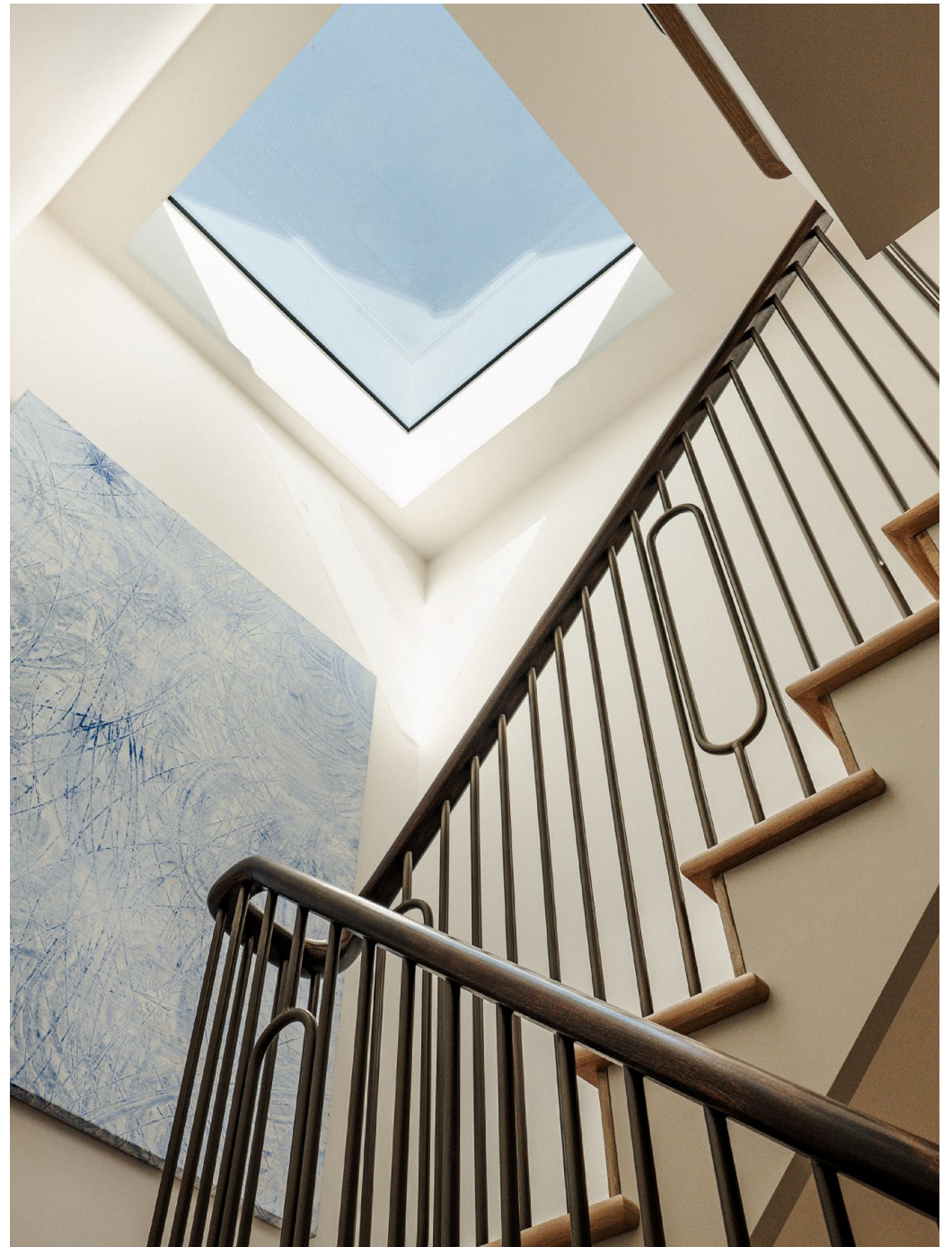




The Bedrooms

The first floor consists of three bedrooms and three bathrooms, two of them ensuite. In addition, all of the rooms offer inbuilt storage space.

The second floor is entirely occupied by a spacious principal bedroom suite. It includes a bedroom, a walk-in wardrobe and a well-proportioned bathroom with shower and bath. In addition, floor-to-ceiling windows and French doors lead out onto the terrace.









The Design



This newly completed house has been finished to the highest standard and includes a 10-year new-build warranty. It also includes Lutron lighting, Oreston Building Management system, a lift to all floors, an inbuilt security system, bespoke joinery and Italian marble in the bathrooms.

The house has been thoughtfully designed in a sophisticated contemporary style, the property's underfloor heating and air conditioning give added comfort throughout.





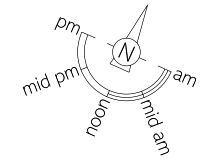
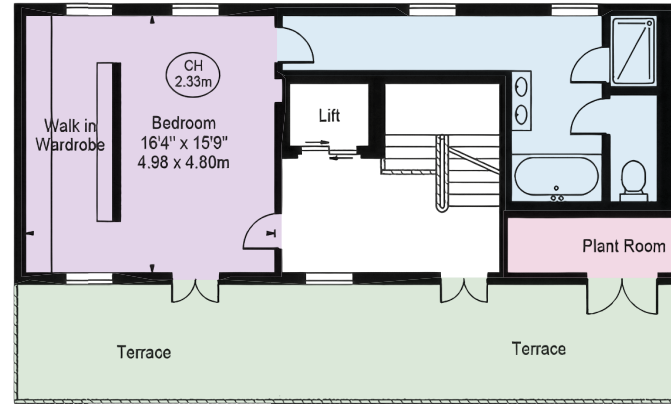
Outdoor Spaces & The Neighbourhood

The house includes a south-facing roof terrace with wooden decking and enough space for outdoor seating. It also features a garage with a 22kW (three-phase) fast home car charger, accessed from the ground floor.

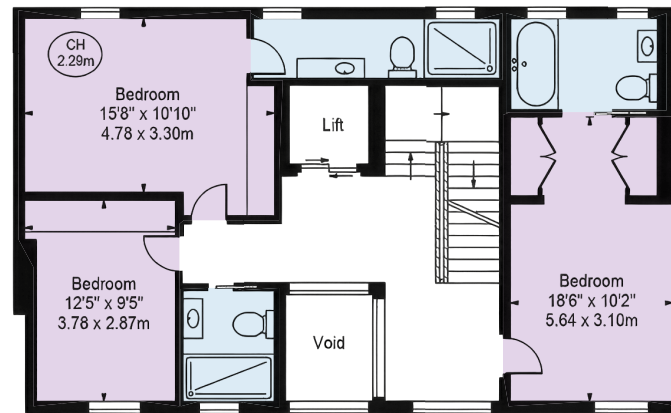
Bridstow Place is a quiet address lined with charming, cottage-like houses. From here, the many restaurants and shops of Westbourne Grove are close, as well as the fashionable streets of Notting Hill. In addition, Royal Oak and Notting Hill Gate stations are both within walking distance.

APPROXIMATE INTERNAL AREA

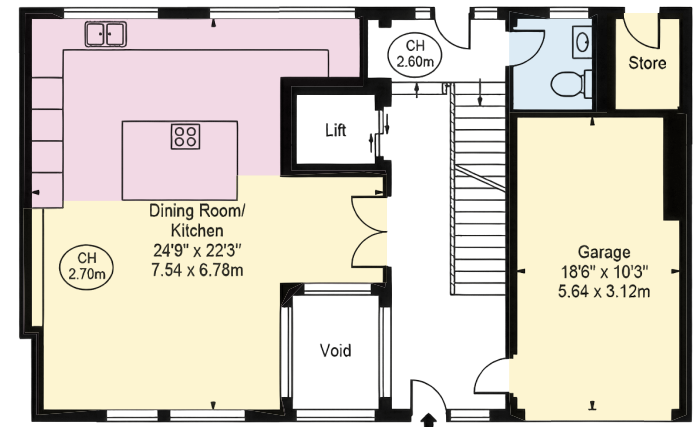
4,255 SQ FT / 395 SQ M



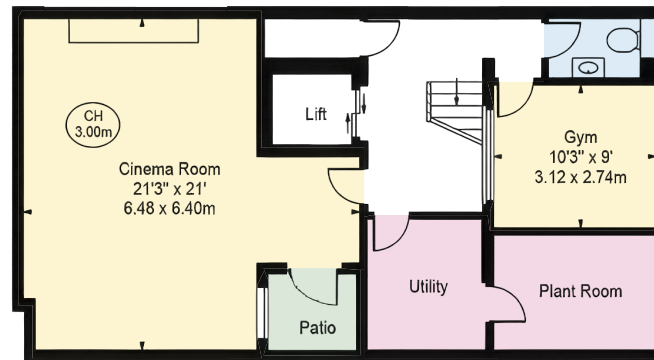
SECOND FLOOR



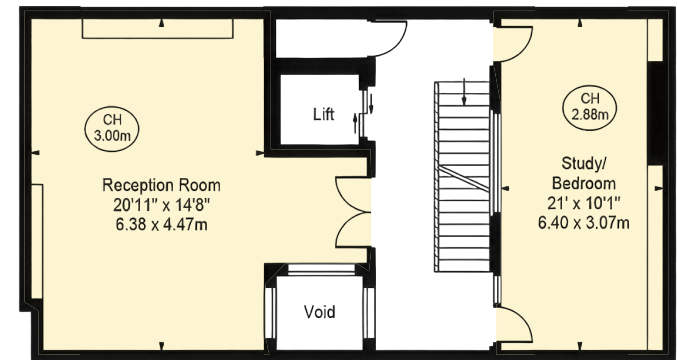
FIRST FLOOR



GROUND FLOOR



BASEMENT



LOWER GROUND FLOOR



Contact us

+44 (0) 20 3761 9691

[Email](#)

www.russellsimpson.co.uk

Kensington & Notting Hill

13 Kensington Square
London W8 5HD

RUSSELL SIMPSON

In accordance with the Property Mis-Description Act 1991, the following details have been prepared in good faith, and are not intended to constitute part of an offer or contract. Any information contained herein (whether in the text, plans or photographs) is given in good faith but should not be relied upon as being a statement of representation of fact. Nothing in these Particulars shall be deemed to be a statement that the property is in good condition or otherwise nor that any services or facilities are in good working order. Any measurements of distances referred to herein are approximate only.
October 2021