

# RUSSELL SIMPSON

A characterful Victorian house with  
renovation potential in the heart of  
Kensington

ANSDELL STREET  
KENSINGTON W8



Ansdell Street  
Kensington W8

£1,250,000

BEDROOMS 4	INTERNAL 1,065 SQ FT	COUNCIL RBKC, Band G
RECEPTION ROOMS 1	99 SQ M	EPC -
BATHROOMS 2		TENURE Freehold



# The Property

Arranged over three storeys, this Victorian house offers an opportunity to create a home within one of Kensington's most established residential streets. Now requiring refurbishment, the house retains a number of original features and presents a blank canvas for a new chapter.

The house is entered on the ground floor, where a reception room occupies the front of the plan. Large windows draw natural light into the space, while herringbone timber flooring adds warmth and character.

Positioned alongside, the kitchen is distinguished by its chequerboard floor and benefits from two west-facing windows that draw afternoon light into the space. Existing storage and a straightforward layout provide a foundation for thoughtful redesign and modernisation.





## Indoor Spaces

The principal bedroom is located on the first floor, accompanied by a further bedroom and a family bathroom. Two additional bedrooms occupy the second floor, together with a second bathroom, providing flexible accommodation that could adapt to a variety of lifestyles and requirements.

The appeal of the house lies not in grand scale but in its character and possibilities. Original window arrangements, period proportions and surviving details speak to its Victorian origins, while the interiors offer scope for careful refurbishment and personalisation.

For those seeking a home to shape according to their own tastes, Ansdell Street presents a rare opportunity to bring new life to a charming period house in a highly sought-after location.







# The Neighbourhood

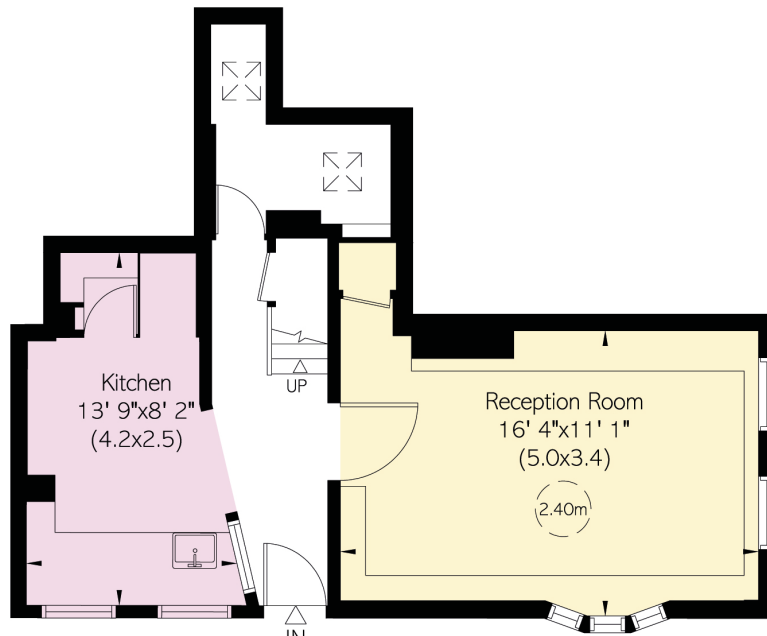
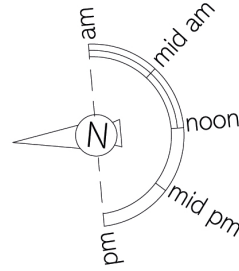
Ansdell Street is a quiet residential street within the Kensington Court Conservation Area, characterised by its handsome Victorian terraces and cohesive architectural character. Kensington High Street is moments away, offering a broad selection of shops, cafés and restaurants, while Kensington Gardens and Hyde Park provide easy access to some of London's most celebrated green spaces.

The museums of South Kensington, including the Victoria and Albert Museum and the Natural History Museum, are within walking distance, and both High Street Kensington and Gloucester Road stations offer convenient connections across London.

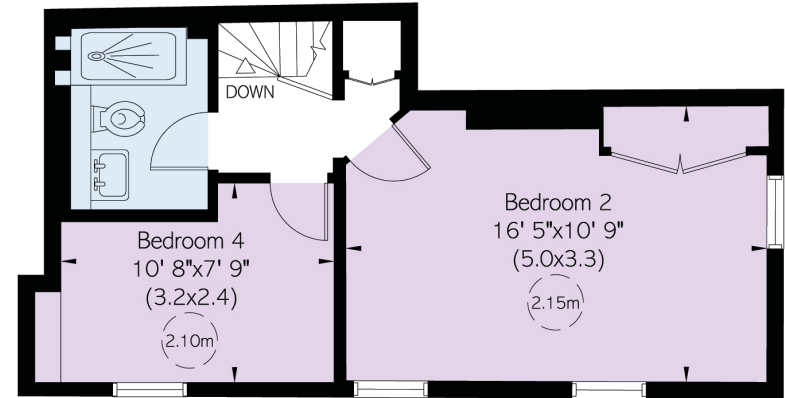
Built during the late nineteenth century, 27 Ansdell Street forms part of the Victorian development that shaped much of modern Kensington. The terrace reflects the period's emphasis on practical urban living, thoughtful proportions and enduring craftsmanship, qualities that continue to define the street today.

APPROXIMATE INTERNAL AREA

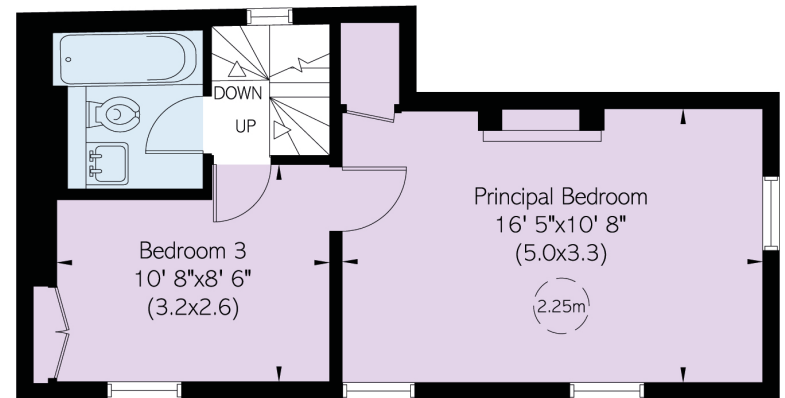
1,065 SQ FT / 99 SQ M



Ground Floor



Second Floor



First Floor



---

## Contact us

+44 (0) 20 3761 9691

[Email](#)

[www.russellsimpson.co.uk](http://www.russellsimpson.co.uk)

---

## Kensington & Notting Hill

13 Kensington Square  
London W8 5HD

# RUSSELL SIMPSON

In accordance with the Property Mis-Description Act 1991, the following details have been prepared in good faith, and are not intended to constitute part of an offer or contract. Any information contained herein (whether in the text, plans or photographs) is given in good faith but should not be relied upon as being a statement of representation of fact. Nothing in these Particulars shall be deemed to be a statement that the property is in good condition or otherwise nor that any services or facilities are in good working order. Any measurements of distances referred to herein are approximate only.  
October 2021