



RUSSELL SIMPSON

Charming flat with garden
views in the heart of
Notting Hill

LADBROKE GARDENS
NOTTING HILL W11

Ladbroke Gardens Notting Hill W11

£1,100,000

| | | | |
|----------------------|-----------------------------|---------------------|-----------------------------|
| BEDROOMS 1 | INTERNAL 620 SQ FT | OUTDOOR 42 SQ FT | COUNCIL RBKC |
| RECEPTION ROOMS 1 | 57 SQ M | EPC C | COUNCIL TAX Band F |
| BATHROOMS 1 | TENURE Share of Freehold | | LENGTH OF LEASE 88 years |





The Property



A delightful first floor flat with a South Facing balcony presented in excellent condition.

Stepping into this well-proportioned flat, one is greeted by a generous reception room with soaring ceilings and ornate cornicing. This light space features floor to ceiling windows that lead out onto a portico balcony, a mezzanine level, and useful study area found tucked away, yet easily accessible, from the main living area.

The contemporary kitchen is thoughtfully designed with fitted units and a breakfast bar arrangement, creating an ideal space for casual dining.



The Bedroom

The bedroom is found to the rear, overlooking the communal gardens offering a green, private outlook. Fitted wardrobes providing ample storage, and a large sash window ensure the space remains bright and airy throughout the day. The bathroom features a modern suite with both a bath and a shower.



Russell Simpson

Ladbroke Gardens





The Neighbourhood

Ladbroke Gardens is a residential street in the heart of Notting Hill, lined with elegant white stucco townhouses that epitomise the area's distinctive architectural character. The location offers the perfect balance of peaceful residential living whilst being moments away from the vibrant amenities of Notting Hill and Ladbroke Grove.

The famous Portobello Road market is a short walk away, offering an eclectic mix of antiques, vintage finds, and international cuisine. Excellent transport links are provided by nearby Ladbroke Grove and Notting Hill Gate stations, connecting directly to central London.

APPROXIMATE INTERNAL AREA
(EXCLUDING MEZZANINE)

620 SQ FT / 57 SQ M

APPROX MEZZANINE AREA

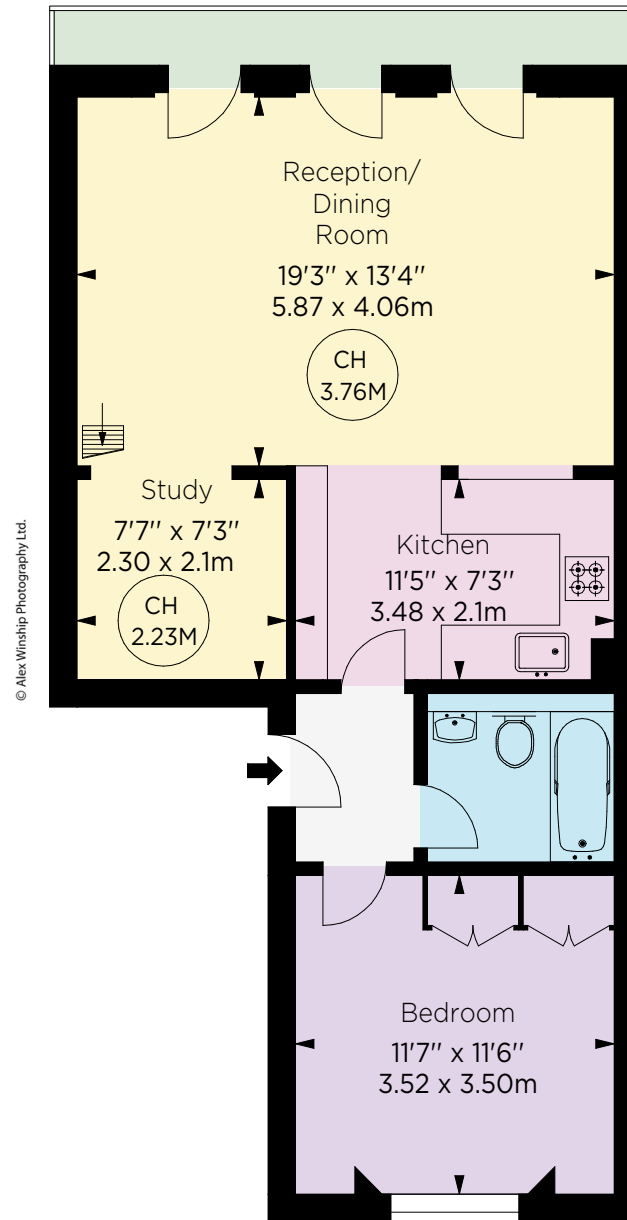
221 SQ FT / 20 SQ M

TOTAL APPROX GROSS INTERNAL AREA

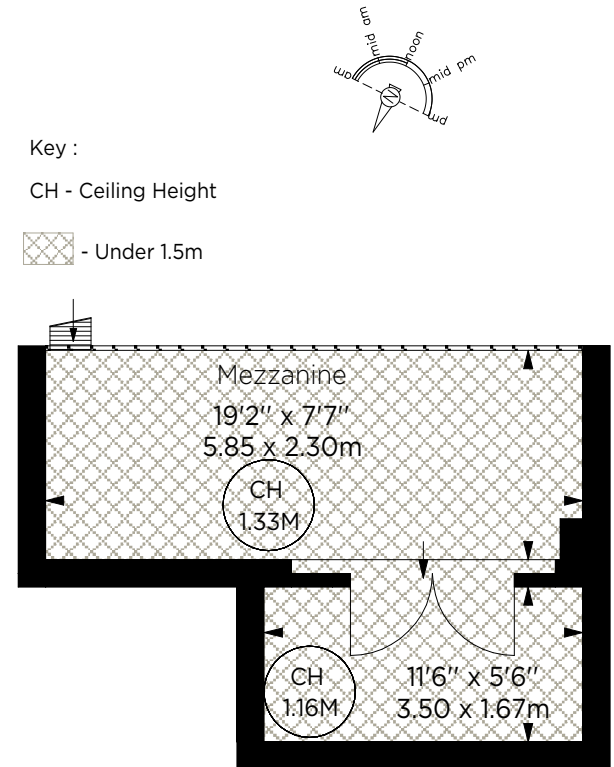
841 SQ FT / 78 SQ M

APPROX OUTDOOR AREA

41 SQ FT / 3.9 SQ M



FIRST FLOOR



MEZZANINE

**RUSSELL
SIMPSON**

Contact us

+44 (0) 20 3761 9691

Email

www.russellsimpson.co.uk

Kensington & Notting Hill

13 Kensington Square

London

W8 5HD

In accordance with the Property Mis-Description Act 1991, the following details have been prepared in good faith, and are not intended to constitute part of an offer or contract.
Any information contained herein (whether in the text, plans or photographs) is given in good faith but should not be relied upon as being a statement of representation of fact.
Nothing in these Particulars shall be deemed to be a statement that the property is in good condition or otherwise nor that any services or facilities are in good working order.
Any measurements of distances referred to herein are approximate only. October 2021