



# RUSSELL SIMPSON

Unique and historic  
Chelsea house with garage  
and spectacular top-floor  
studio

MALLORD STREET  
CHELSEA SW3

# Mallord Street Chelsea SW3

£6,250,000

BEDROOMS 3	INTERNAL 2,910 <small>SQ FT</small>  270 <small>SQ M</small>	OUTDOOR 309 <small>SQ FT</small>	COUNCIL RBKC
RECEPTION ROOMS 2		EPC C	COUNCIL TAX Band H
BATHROOMS 3	TENURE Freehold		









# The Property



Beautifully designed three-bedroom house with a rich artistic history close is to the King's Road.

Going upstairs, you reach a mezzanine with a private light-filled study. The second floor is almost entirely occupied by a magnificent studio space. This includes double-height ceilings, an impressive fireplace and exceptionally large windows. There is also a panelled library area with inbuilt shelving and a bar.





## Indoor Spaces

Entering the house on the ground floor, you step into a spacious staircase hall. On one side is a recently fitted kitchen with a central island breakfast bar and an informal dining area. On the other side is a comfortable reception room with inbuilt shelving. Beyond lies a bedroom with an ensuite bathroom and storage space.

The house has been tastefully decorated to a high standard, blending classical and contemporary details while taking full advantage of the exceptional proportions.

Russell Simpson

Mallord Street













# The Bedrooms

The first floor features a generous principal bedroom. It includes a dressing room, an ensuite bathroom with a bath, a boudoir and a French door with views down the length of Mallord Street, which leads onto the roof garden. The western orientation means the room is filled with light from the afternoon sun. This floor also contains a second bedroom with ensuite bathroom and a cloakroom.





# Outdoor Spaces

The house was built in 1911 for the watercolourist Cecil Arthur Hunt. Its architect was Ralph Knott, who was best known for designing the London County Hall building. This is a perfect example of the 'studio house', with a large space for painting on the top floor to take full advantage of the light.

The house was also home to the world-renowned Hungarian pianist Louis Kentner. More recently, the studio space has been used to host recitals, recalling this rich cultural history.

The property includes a garage with off-street parking. In addition, the roof garden on the first floor which has wooden decking.





# The Neighbourhood

Mallord Street is one of Chelsea's most charming addresses. It was named after J.M.W. Turner – Mallord was the painter's middle name – and lined with Edwardian houses built in the Arts and Crafts style. Over the years, this street has been home to numerous creative figures, including painters, composers and writers. The most well-known of these was the author A.A. Milne, who created the Winnie the Pooh books.

Mallord Street is moments away from the King's Road, with its celebrated range of restaurants and shops. In addition, Sloane Square and South Kensington underground stations are both within walking distance.





APPROXIMATE INTERNAL AREA

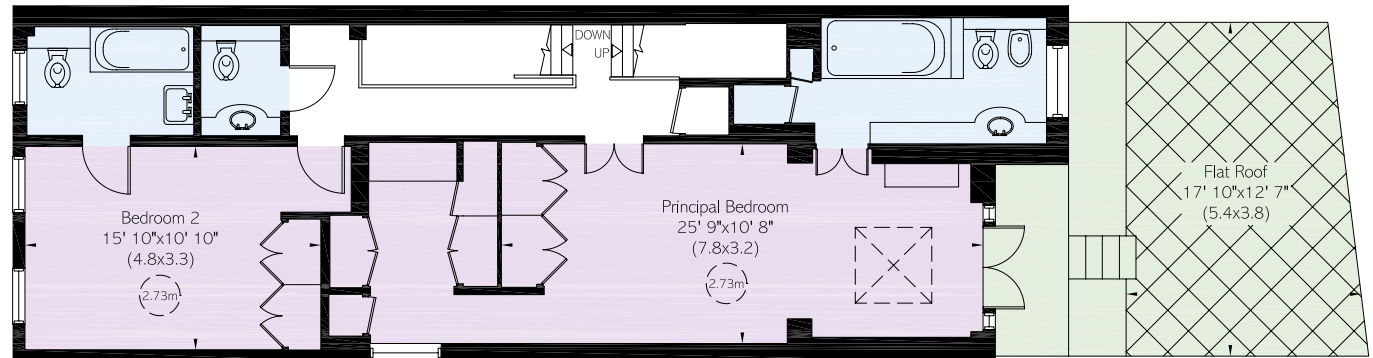
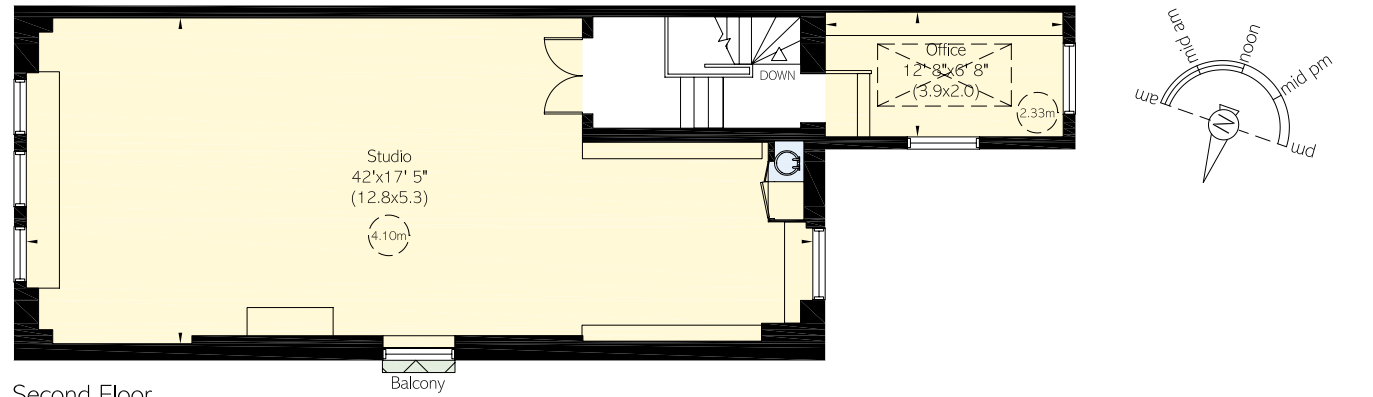
2,910 SQ FT / 270 SQ M

INCLUDING GARAGE

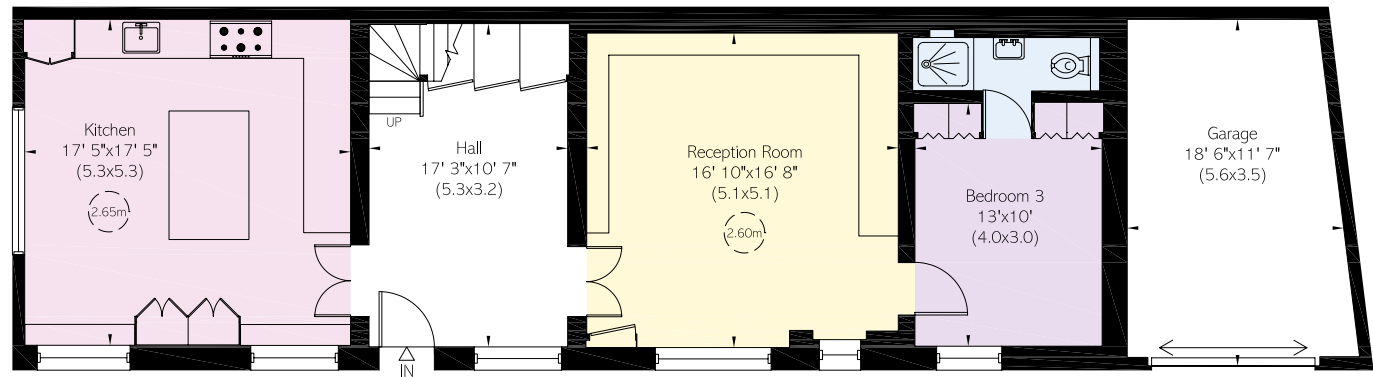
208 SQ FT / 19 SQ M

OUTSIDE AREA

309 SQ FT / 29 SQ M



First Floor



Ground Floor



# RUSSELL SIMPSON

---

## Contact us

+44 (0) 20 7225 0277

Email

Whatsapp

[www.russellsimpson.co.uk](http://www.russellsimpson.co.uk)

---

## Chelsea

151A Sydney Street  
London  
SW3 6NT

In accordance with the Property Mis-Description Act 1991, the following details have been prepared in good faith, and are not intended to constitute part of an offer or contract.  
Any information contained herein (whether in the text, plans or photographs) is given in good faith but should not be relied upon as being a statement of representation of fact.  
Nothing in these Particulars shall be deemed to be a statement that the property is in good condition or otherwise nor that any services or facilities are in good working order.  
Any measurements of distances referred to herein are approximate only. October 2021