



RUSSELL SIMPSON

Beautiful four-bedroom house with a spacious garden on an attractive and sought-after street

PARK WALK
CHELSEA SW10

Park Walk Chelsea SW10

£3,950,000

BEDROOMS 4	INTERNAL 2,085 SQ FT	COUNCIL RBKC, Band H
RECEPTION ROOMS 3	194 SQ M	EPC D
BATHROOMS 2		TENURE Freehold



The Property

Family home with superbly designed and decorated interiors close to the Fulham Road

Entering the house on ground floor, the front hall leads into a bright reception room with wooden floors, high ceilings and a double aspect from front and rear windows.

The lower ground is a contemporary space with rooms flowing together to create a convenient layout. It includes an open-plan kitchen with an informal breakfast area and access into the garden. A guest loo completes this floor.

On one side is a family television room, on the other side a stylish dining room, also with garden access. In addition, this floor features a guest WC, storage space and separate street access. Both the ground and lower ground floor offer underfloor heating.

The house has been decorated in a sophisticated contemporary style. The upper levels have tasteful and restrained interiors, while the lower ground floor makes greater use of contemporary materials to maximise the sense of light and space.



Russell Simpson

Park Walk





The first floor features a principal bedroom with a well-proportioned ensuite bathroom, including a large bath. There is also a dressing room on the half landing.

The second floor includes three more bedrooms and a shared bathroom, also with a bath. Furthermore, this floor features a convenient midnight kitchen.







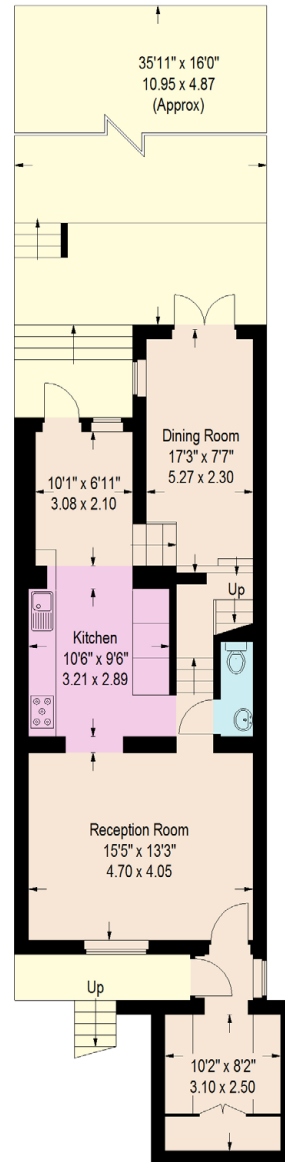
The Neighbourhood

The property includes a stepped rear garden with a patio, a lawn and a paved eating area. It is also set back from the street with a front garden giving added privacy, while the façade is decorated with wisteria that blooms in glorious fashion each spring.

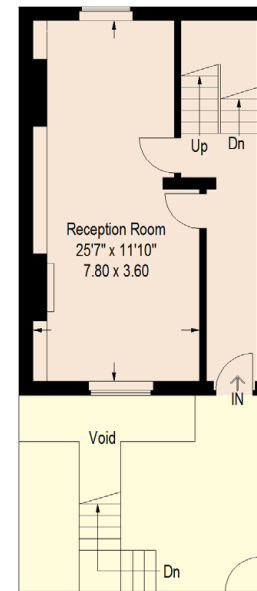
Park Walk is an attractive address lined with a mix of terrace houses and red brick mansion blocks. From here, the restaurants and shops of the Fulham Road are close, while the King's Road is also nearby. In addition, Gloucester Road station is a short walk away.

APPROXIMATE INTERNAL AREA

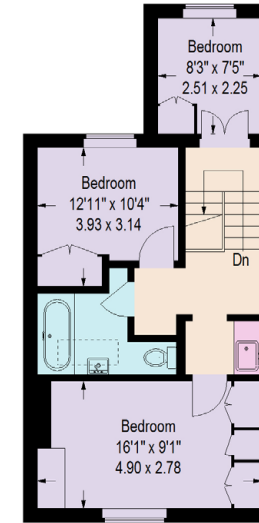
2,085 SQ FT / 193 SQ M



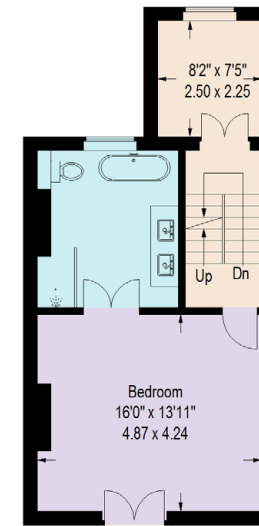
LOWER GROUND FLOOR



GROUND FLOOR



SECOND FLOOR



FIRST FLOOR

**RUSSELL
SIMPSON**

Contact us

+44 (0) 20 7225 0277

Email

www.russellsimpson.co.uk

Chelsea

151A Sydney Street

London

SW3 6NT

In accordance with the Property Mis-Description Act 1991, the following details have been prepared in good faith, and are not intended to constitute part of an offer or contract.
Any information contained herein (whether in the text, plans or photographs) is given in good faith but should not be relied upon as being a statement of representation of fact.
Nothing in these Particulars shall be deemed to be a statement that the property is in good condition or otherwise nor that any services or facilities are in good working order.
Any measurements of distances referred to herein are approximate only. October 2021