

**RUSSELL  
SIMPSON**

Elegant three-bedroom mews with large  
roof terrace

PRINCE'S MEWS  
NOTTING HILL W2



Prince's Mews  
Notting Hill W2

£1,550,000

BEDROOMS 3	INTERNAL 929 SQ FT	OUTDOOR 168 SQ FT	COUNCIL Westminster
RECEPTION ROOMS 1	86 SQ M	EPC E	COUNCIL TAX Band G
BATHROOMS 2	—	TENURE Freehold	



# The Property

A beautifully presented freehold house on this peaceful address

Upon entering, one is greeted by a spacious hallway giving access to the primary living areas. The reception room is filled with light from French doors that can be opened directly onto the cobbled mews with the kitchen located separately, featuring fitted units and overlooking the mews through sash windows. Wooden floors throughout this level create a sense of warmth and continuity.





## Indoor Spaces

There are two bedrooms on the first floor, the principal benefiting from good storage and an en-suite bathroom, the second a smaller double. The family bathroom is on this level, with the larger second bedroom on the second floor. This floor also has space for an office, as well as giving access to the outside space.



# Outdoor Spaces & The Neighbourhood

The property includes a substantial roof terrace with paved floors and established planting, and ample space for outdoor dining and entertaining.

Princes Mews is a quiet cobbled mews on the cusp of Notting Hill and Bayswater, moments away from the open spaces of Hyde Park. The location offers excellent transport links with a number of Underground stations within easy walking distance, and providing access to the Central and Circle lines. The area features numerous restaurants, cafes and shops along Queensway and Westbourne Grove, while the upmarket boutiques of Notting Hill are a short walk away.

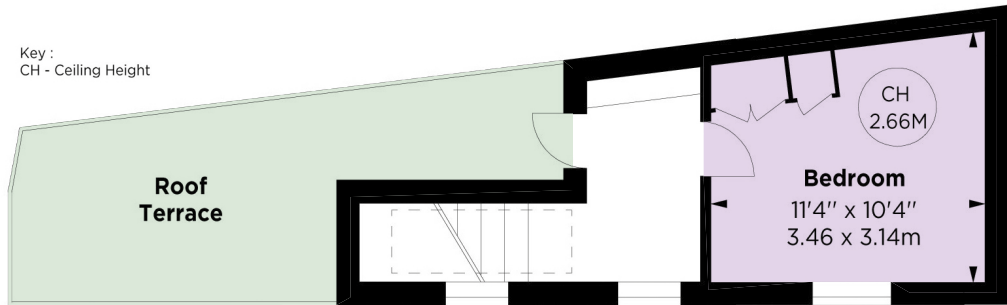


APPROXIMATE INTERNAL AREA

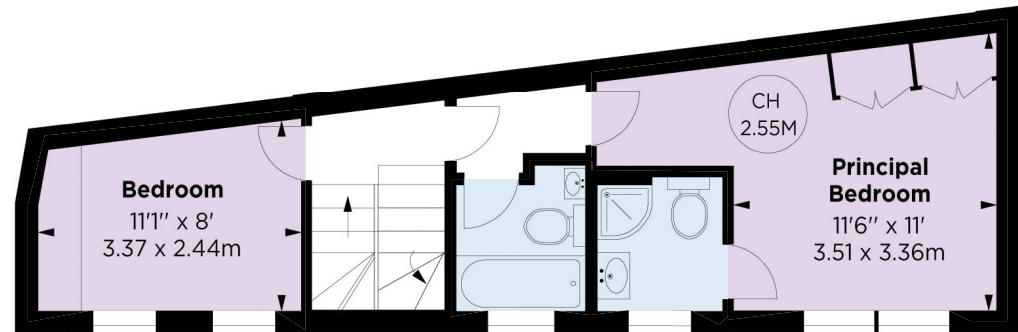
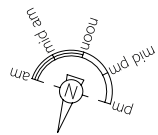
929 SQ FT / 86 SQ M

OUTDOOR AREA

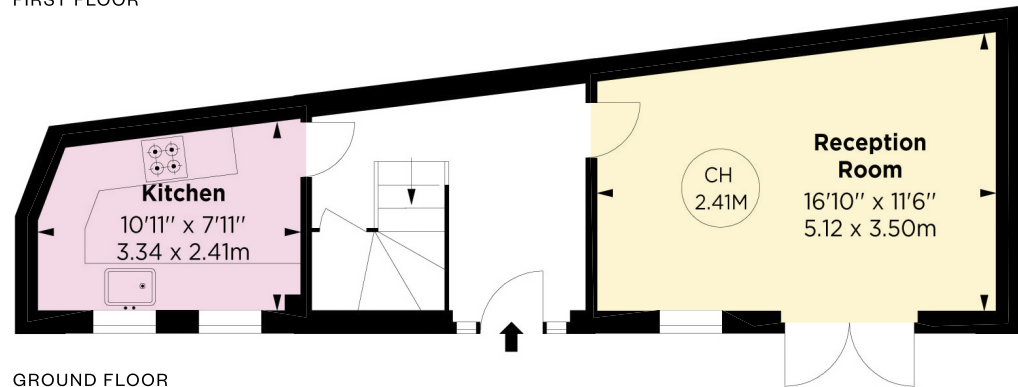
168 SQ FT / 15 SQ M



SECOND FLOOR



FIRST FLOOR



GROUND FLOOR



---

## Contact us

+44 (0) 20 3761 9691

[Email](mailto:info@russellsimpson.co.uk)

[www.russellsimpson.co.uk](http://www.russellsimpson.co.uk)

---

## Kensington & Notting Hill

13 Kensington Square  
London W8 5HD

# RUSSELL SIMPSON

In accordance with the Property Mis-Description Act 1991, the following details have been prepared in good faith, and are not intended to constitute part of an offer or contract. Any information contained herein (whether in the text, plans or photographs) is given in good faith but should not be relied upon as being a statement of representation of fact. Nothing in these Particulars shall be deemed to be a statement that the property is in good condition or otherwise nor that any services or facilities are in good working order. Any measurements of distances referred to herein are approximate only.  
October 2021