



RUSSELL SIMPSON

Exquisitely designed and
decorated five-bedroom house
on a secluded mews street

THORNTON PLACE
MARYLEBONE W1H

Thornton Place Marylebone W1H

£3,650,000

BEDROOMS 5	INTERNAL 2,394 <small>SQ FT</small> 222 <small>SQ M</small>	OUTDOOR 222 <small>SQ FT</small>	COUNCIL Westminster
RECEPTION ROOMS 2		EPC C	COUNCIL TAX Band G
BATHROOMS 3	—	TENURE Freehold	



The Property



Surprisingly spacious mews with sophisticated contemporary interiors close to Regent's Park

Stepping into the house on the ground floor, the entrance leads through to a stylish staircase hall. This level offers a pair of bedrooms with a connecting door that can be opened to create a single space. Furthermore, it offers a utility room and a bathroom with a bath.

The first floor includes a generous principal bedroom suite. This includes an ensuite bathroom, a well-proportioned dressing area and a bedroom with double French doors opening onto a Juliet balcony. This floor also features a sitting room flowing through to a home office, as well as a guest WC.



The second floor is entirely occupied by a generous living area, consisting of an open-plan kitchen with separate dining and seating areas. Wooden floors, modern units, and a dual aspect add to the sense of brightness and space.

Furthermore, a retractable roof makes for the perfect summer setting.





The house was designed in a sophisticated contemporary style by celebrated architect Dionisys Zacharias. Limestone and polished plaster blend with a neutral palette to create bright interior spaces. It has been beautifully maintained and offers underfloor heating throughout.



The lower ground floor consists of two more bedrooms. One has private patio access, and they both share a bathroom. An attractive bespoke staircase connects each level and offers a striking visual feature.





The Neighbourhood

The property includes a south-facing terrace with rooftop views.

Thornton Place is an attractive and secluded mews in Marylebone. This cobbled street is mostly lined with modern houses, yet it retains a traditional village-like atmosphere.

From here, Marylebone Station is close, while Baker Street Station is also nearby. Furthermore, the many restaurants, shops and private boutiques of Marylebone High Street are within easy reach.

APPROXIMATE INTERNAL AREA

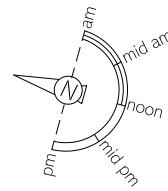
2,394 SQ FT / 222 SQ M


INCLUDING LIMITED USE AREA

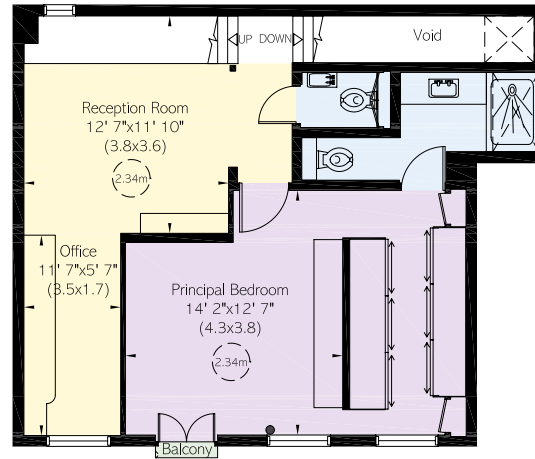
37 SQ FT / 3 SQ M

OUTSIDE AREA

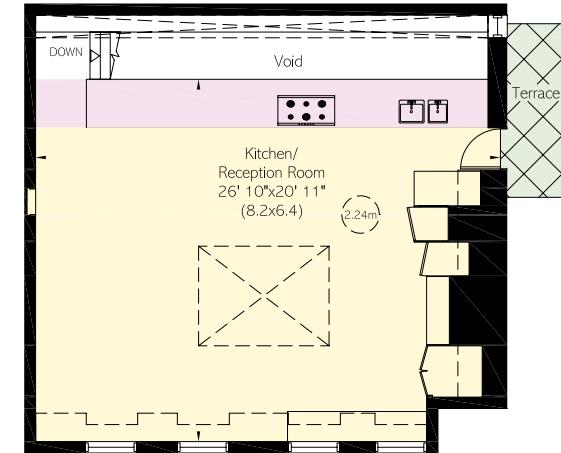
63 SQ FT / 6 SQ M



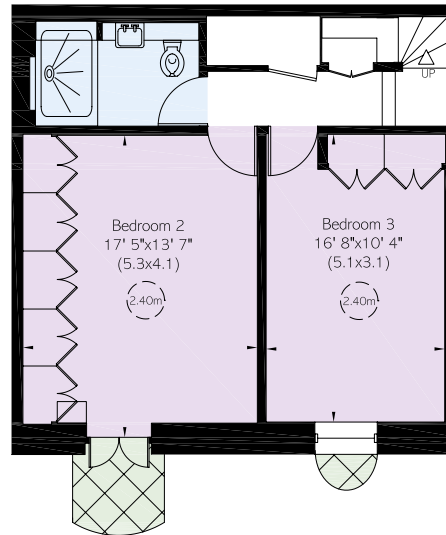
 Reduced head height below 1.5m



First Floor



Second Floor



Lower Ground Floor



Ground Floor

RUSSELL SIMPSON

Contact us

+44 (0) 20 3815 9144

Email

www.russellsimpson.co.uk

Marylebone & Mayfair

50 Grosvenor Hill
London W1K 3QT

View

[Watch the video on YouTube](#)

In accordance with the Property Mis-Description Act 1991, the following details have been prepared in good faith, and are not intended to constitute part of an offer or contract.
Any information contained herein (whether in the text, plans or photographs) is given in good faith but should not be relied upon as being a statement of representation of fact.
Nothing in these Particulars shall be deemed to be a statement that the property is in good condition or otherwise nor that any services or facilities are in good working order.
Any measurements of distances referred to herein are approximate only. October 2021